

UW-River Falls

Falcon Basketball



2006-07



General Information

School: UW-River Falls
Location: River Falls, Wis.
Address: 410 S. Third St.
River Falls, WI 54022
Chancellor: Don Betz
Founded: 1874
Enrollment: 6,100
Nickname: Falcons
School colors: Red and White
Arena/capacity: Karges Center / 1,800
Affiliation: NCAA Div. III
Conference: Wisconsin Intercollegiate Athletic
Athletic director: Rick Bowen (715-425-3246)
Athletic trainer: Gary Elotanta (715-425-3130)
Sports information: Jim Thies (715-425-3846)

Coaching Staff

Head Coach: Cindy Hovet
Alma Mater: UW-Stout (1994)
Record at School: 84-73
Career Record: 84-73
Vs. Superior: 7-5
Vs. Stevens Point: 3-11
Assistant Coaches: Kathy Holbrook, Mike Babler, Nick Hall
Managers: Janelle Yang-Fellenz, Lori Kleven, Brittany Johnson

Team Information

Overall 2006 record: 12-14
WIAC record, finish: 8-8 (5th place tie)
Home record: 9-3
Road record: 2-11
Neutral Record: 1-0

Upcoming Games

Game 4
UW-River Falls (3-0, 0-0 WIAC)
vs.
UW-Superior (2-1, 0-0 WIAC)
River Falls, Wis.
Karges Center, UW-River Falls
Wednesday, Nov. 29, 7 p.m.

Game 5
River Falls (3-0, 0-0 WIAC)
vs.
UW-Stevens Point (5-0, 0-0 WIAC)
River Falls, Wis.
Karges Center, UW-River Falls
Saturday, Dec. 2, 5 p.m.

After compiling a 3-0 non-conference record, the Falcons open WIAC play this week with two home games. Wednesday the Falcons host Superior at 7 p.m., and Stevens Point on Saturday at 5 p.m. **UWRF** features three players who average in double figures in scoring; Megan Lindman (14.3), Traci Reimann (11.7) and Melanie Preiner (10.3). The Falcons have had three different players lead them in scoring in the three games. The Falcons have a +25 scoring margin, but are -2.7 in rebounding margin. **UWS** also has three players who average in double digits in scoring; Katie Moench (18.3), Amanda Rounsville (11.7) and Ashley Laidley (11.3). Coach Donald Mulhern is in his first season. **UWSP** was picked in the WIAC pre-season SID poll to finish second. The Pointers also have three players who average in double figures; Jesirae Heuer (13.2), Haley Houghton (12.6) and Katie Webber (10). **UWSP** has a +14 rebound margin and a +25 scoring margin.

Cindy Hovet

Head Coach

Cindy Hovet returns to the helm entering her seventh year as the head basketball coach at UW-River Falls with the 2006-07 season.

Hovet works to get the most out of her players both on and off the court. Ten of last season's 12 Falcons earned their way onto the WIAC Scholastic Honor Roll. The Falcons have held their own in competing in the tough Wisconsin Intercollegiate Athletic Conference that has produced three NCAA champions and two second-place finishers.

She starts the 2006-07 season fourth among active WIAC coaches in wins. She needs just eight wins to move into 13th place in wins among all WIAC coaches. Hovet has coached 12 Falcons to All-WIAC honors and Erin Effle was named the WIAC basketball Scholar-Athlete after the 2004-05 season.

Hovet was inducted into the UW-Stout Athletic Hall of Fame in November 2005. She is the only person who has been named a WIAC Coach of the Year (2001) and WIAC Player of the Year (1994).

The Falcons play another rugged 25-game schedule in 2006-07. UWRF will look to get off to a fast start with the first games at the Karges Center. The Falcons play three MIAC teams to start the season - Hamline, Augsburg and St. Thomas. The Tommies have won more MIAC titles (10) than any other institution. The Falcons open WIAC play on Nov. 29 against Superior and perhaps the biggest game of the early-season schedule will be a home contest against Stevens Point on Dec. 2.

"With five seniors we have a lot of experience and maturity to lead us. This is the strongest senior class I've ever coached and I'm excited about the opportunity they have to put together a really special season," said Hovet.

"Traci (Reimann) and Megan (Lindman) are the toughest post tandem in the league; Krista (Cordes) is versatile and can shoot the lights out; Chan (Melgaard) is a great athlete and competitor and Melanie (Preiner) is one of the best all-around players I've seen. We also have a solid group of young players that will contribute a great deal to our team; they are the future of our basketball program. This team has some great players that are truly exceptional people, I'm proud of them and I couldn't ask for a better group of women to coach this year."

The 2005-06 Falcons had a disappointing 12-14 overall record, but managed to finish 8-8 in the WIAC. The biggest win for the Falcons was a 67-48 victory over Oshkosh at the Karges Center on Jan. 28. Oshkosh finished in a tie for first place in the final WIAC standings.

In 2004-05 the Falcons finished 17-8 overall and 10-6 and in fourth place in the WIAC. The 17 wins and 10 WIAC victories were the second most by a Hovet coached team.

The 2003-04 season concluded with a 13-13 overall record, and 4-12 in the WIAC. Although the team didn't do as well in conference play as they had hoped, they managed to put together a perfect 9-0 non-conference record. That perfect record included impressive victories against two NCAA national tournament qualifiers, Lakeland (22-6) and Maryville (23-3). Both Lakeland and Maryville went undefeated and were champions of their respective conferences.

UWRF finished in sixth place in the WIAC with a 10-15 overall record in 2002-03 and 11-15 in 2001-02. Hovet's first season at the helm for UWRF was the program's most successful since 1988-89. With an 18-8 overall record, they tied for third place in the conference. Hovet was named the WIAC Coach of the Year for the team's accomplishments that season.

Hovet was the UWRF head tennis coach and assistant basketball coach for five years before taking over the basketball program in 2000-01. Her playing career was also in the WIAC. As a student-athlete at UW-Stout she was a two-time All-WIAC first team selection in 1993 and 1994. Her senior season she was named the 1994 WIAC Player of the Year and earned All-American honors. She was named to the second All-WIAC team in 1992. She helped the Blue Devils to a 76-27 record and berths in both the NCAA Division III and NAIA National Tournaments for four seasons.

Hovet received her psychology undergraduate degree and coaching minor from UW-Stout. She completed her Master's Degree in kinesiology with an emphasis in sport psychology and sociology at the University of Minnesota. She currently teaches at UWRF in the health & human performance department along with her coaching duties.



2006-07 Falcon Schedule

Date	Opponent	Time/Result
N 21	Hamline	W, 76-51
N 25	Augsburg	W, 80-40
N 26	St. Thomas	W, 58-48
N 29	Superior*	7 p.m.
D 2	Stevens Point*	5 p.m.
D 6	at Eau Claire*	8 p.m.
D 9	Platteville*	3 p.m.
D 13	at Macalester	7 p.m.
D 15	at Northwestern	7 p.m.
D 29	vs. Drew^	11 a.m.
D 30	vs. Wesleyan^	noon
J 2	Finlandia	6 p.m.
J 4	at St. Scholastica	6 p.m.
J 6	at Whitewater*	3 p.m.
J 10	at Stout*	7 p.m.
J 13	Oshkosh*	3 p.m.
J 17	at La Crosse*	7 p.m.
J 20	at Stevens Point	5 p.m.
J 24	at Superior*	7 p.m.
J 27	at Oshkosh*	3 p.m.
J 31	Stout*	7 p.m.
F 3	at Platteville*	3 p.m.
F 7	Eau Claire*	8 p.m.
F 10	Whitewater*	3 p.m.
F 14	La Crosse*	7 p.m.
F 19	WIAC Tournament	TBD

* WIAC Games
^ Phoenix Tournament



Kathy Holbrook
Assistant Coach



Mike Babler
Assistant Coach



Nick Hall
Assistant Coach

2006-07 Falcon Basketball Schedule

Day	Date	Opponent	Site	Time/Result	Overall Record/WIAC
Tuesday	Nov. 21	Hamline	H	W, 76-51	1-0, 0-0
Saturday	Nov. 25	Augsburg	H	W, 80-40	2-0, 0-0
Sunday	Nov. 26	St. Thomas	H	W, 58-48	3-0, 0-0
Wednesday	Nov. 29	UW-Superior*	H	7 p.m..	
Saturday	Dec. 2	UW-Stevens Point*	H	5 p.m.	
Wednesday	Dec. 6	UW-Eau Claire*	A	8 p.m.	
Saturday	Dec. 9	UW-Platteville*	H	3 p.m.	
Wednesday	Dec. 13	Macalester	A	7 p.m.	
Friday	Dec. 15	Northwestern	A	7 p.m.	
Friday	Dec. 29	Drew^	N	11 a.m.	
Saturday	Dec. 30	Wesleyan^	N	noon	
Tuesday	Jan. 2	Finlandia	H	6 p.m.	
Saturday	Jan. 6	UW-Whitewater*	A	3 p.m.	
Wednesday	Jan. 10	UW-Stout*	A	7 p.m.	
Saturday	Jan. 13	UW-Oshkosh*	H	3 p.m.	
Wednesday	Jan. 17	UW-La Crosse*	A	7 p.m.	
Saturday	Jan. 20	UW-Stevens Point*	A	5 p.m.	
Wednesday	Jan. 24	UW-Superior*	A	7 p.m.	
Saturday	Jan. 27	UW-Oshkosh*	A	3 p.m.	
Wednesday	Jan. 31	UW-Stout*	H	7 p.m.	
Saturday	Feb. 3	UW-Platteville*	A	3 p.m.	
Wednesday	Feb. 7	UW-Eau Claire*	H	8 p.m.	
Saturday	Feb. 10	UW-Whitewater*	H	3 p.m.	
Wednesday	Feb. 14	UW-La Crosse*	H	7 p.m.	
Monday	Feb. 19	WIAC Playoffs	TBD	TBD	
Wednesday	Feb. 21	WIAC Semifinals	TBD	TBD	
Saturday	Feb. 25	WIAC Finals	TBD	TBD	

* WIAC Games
 ^ Phoenix Tournament

River Falls Record When	
Leading at Halftime	3-0
Trailing at Halftime	0-0
Tied at Halftime	0-0
Games Decided by 1-4 Points	0-0
Games Decided by 5-9 Points	0-0
Games Decided by 10+ Points	3-0
Scoring 80 Points or More	1-0
Scoring 70-79 Points	1-0
Scoring 60-69 Points	0-0
Scoring 45-59 Points	1-0
Opponents Score 80-89 Points	0-0
Opponents Score 70-79 Points	0-0
Opponents Score 60-69 Points	0-0
Opponents Score 50-59 Points	1-0
Opponents Score 50 or Fewer	2-0
Lindman Leads Team in Scoring	1-0
Reimann Leads Team in Scoring	1-0
Flanscha Leads Team in Scoring	1-0

UWRF SPORTS INFORMATION	
Director: Jim Thies	
Phone: 715-425-3846	
Home: 715-386-9252	
Cell: 715-222-1455	
Fax: 715-425-4486	
E-mail: james.g.thies@uwrf.edu	
Athletics Web: www.uwrf.edu/sports	
Basketball Web Site: www.uwrf.edu/sports/sports0607/wbb_menu.htm	

Visit the Falcons on The Web
www.uwrf.edu/sports/sports0607/wbb_menu.htm

2006-07 FALCON NUMERICAL ROSTER

No	Name	Pos.	Hgt.	Yr.	Hometown/High School
10	Katie Sheets	G	5-6	Fr.	Lakeville, MN/North
12	Janelle Daniels	G	5-3	So.	Hudson, WI
20	Melanie Preiner	G	5-6	Sr.	Stillwater, MN
21	Kim Sorenson	G	5-4	Jr.	Blaine, MN
22	Krystal Parr	G	5-4	Fr.	Bloomer, WI
23	Jana Benitz	G	5-7	Jr.	Plum City, WI
24	Justine Speckel	G	5-10	So.	Buffalo, MN
25	Traci Reimann	P	6-0	Sr.	North Branch, MN
30	Tessa Rohl	G	5-7	Fr.	Buffalo, MN
31	Chantele Melgaard	G	5-9	Sr.	Lakeville, MN
33	Kelli Hilt	G	5-6	Fr.	Lakeville, MN/North
34	Caitlin Hunstock	P	5-10	Jr.	Minneapolis, MN/South
40	Kelsie Flanscha	P	6-0	Fr.	River Falls, WI
42	Meghan Hunstock	P	5-11	Jr.	Minneapolis, MN/South
43	Krista Cordes	G	5-9	Sr.	Farmington, MN
44	Megan Lindman	P	6-0	Sr.	Rochester, MN/Mayo

Head coach: Cindy Hovet

Assistant coaches: Kathy Holbrook, Mike Babler, Nick Hall

Managers: Janelle Yang-Fellenz, Lori Kleven, Brittany Johnson

2006-07 FALCON ALPHABETICAL ROSTER

No	Name	Pos.	Hgt.	Yr.	Hometown/Last Team
23	Jana Benitz	G	5-7	Jr.	Plum City, WI
43	Krista Cordes	G	5-9	Sr.	Farmington, MN
12	Janelle Daniels	G	5-3	So.	Hudson, WI
40	Kelsie Flanscha	P	6-0	Fr.	River Falls, WI
33	Kelli Hilt	G	5-6	Fr.	Lakeville, MN/North
34	Caitlin Hunstock	P	5-10	Jr.	Minneapolis, MN/South
42	Meghan Hunstock	P	5-11	Jr.	Minneapolis, MN/South
44	Megan Lindman	P	6-0	Sr.	Rochester, MN/Mayo
31	Chantele Melgaard	G	5-9	Sr.	Lakeville, MN
22	Krystal Parr	G	5-4	Fr.	Bloomer, WI
20	Melanie Preiner	G	5-6	Sr.	Stillwater, MN
25	Traci Reimann	P	6-0	Sr.	North Branch, MN
30	Tessa Rohl	G	5-7	Fr.	Buffalo, MN
10	Katie Sheets	G	5-6	Fr.	Lakeville, MN/North
21	Kim Sorenson	G	5-4	Jr.	Blaine, MN
24	Justine Speckel	G	5-10	So.	Buffalo, MN

PRONOUNCIATION GUIDE

Melanie Preiner - PRY ner

Jana Benitz - ben ITZ

Traci Reimann - RYE men

UW-River Falls

WIAC Champions

1988, 1989

Visit the Falcons on The Web

www.uwrf.edu/sports/sports0607/wbb_menu.htm

2006 WIAC Basketball

2006 WIAC STANDINGS

	WIAC W-L	Overall W-L
Stevens Point	0-0	5-0
Stout	0-0	5-0
River Falls	0-0	3-0
Eau Claire	0-0	4-1
Platteville	0-0	4-1
Whitewater	0-0	4-2
Superior	0-0	2-1
Oshkosh	0-0	3-2
La Crosse	0-0	2-2

Upcoming games

Wednesday, Nov. 29

Superior at River Falls, 7 p.m.

Stout at Eau Claire, 7 p.m.

Whitewater at La Crosse, 7 p.m.

Oshkosh at Stevens Point, 7 p.m.

Platteville at Millikin, 7 p.m.

Saturday, Dec. 2

Stevens Point at River Falls, 5 p.m.

Eau Claire at La Crosse, 5 p.m.

Superior at Oshkosh, 3 p.m.

Stout at Platteville, 5 p.m.

Sunday, Dec. 3

Northland at Oshkosh, 1 p.m.

Recent Results

Sunday, Nov. 26

River Falls 58, St. Thomas 48

Stout 82, Northland 62

Chicago 82, Whitewater 72

Simpson 77, La Crosse 73

Saturday, Nov. 25

River Falls 80, Augsburg 40

Oshkosh 67, North Central 56

Stevens Point 71, Wheaton 44

Stout 70, St. Scholastica 58

Whitewater 82, Luther 59

Eau Claire 74, Morningside 65

La Crosse 81, MSOE 57

Preseason SID Poll

Team (First Place Votes)

1. Stout (7)
2. Stevens Point (1)
3. Eau Claire
4. La Crosse (1)
5. Oshkosh
6. River Falls
7. Whitewater
8. Platteville
9. Superior

2005-06 Record

- 22-8, 12-4
- 20-8, 11-5
- 13-13, 8-8
- 19-8, 9-7
- 19-8, 12-4
- 12-14, 8-8
- 12-14, 6-10
- 10-15, 6-10
- 4-20, 0-16



2006-07 Falcon Roster

Name	Pos.	Hgt.	Yr.	PPG	RPG	A
10 Katie Sheets	G	5-6	Fr.	-	-	-
12 Janelle Daniels	G	5-3	So.	1.5	.5	1
20 Melanie Preiner	G	5-6	Sr.	10.3	4.0	7
21 Kim Sorenson	G	5-4	Jr.	4.0	1.3	3
22 Krystal Parr	G	5-4	Fr.	.0	.5	1
23 Jana Benitz	G	5-7	Jr.	1.0	3.0	1
24 Justin Speckel	G	5-10	So.	.0	.0	0
25 Traci Reimann	P	6-0	Sr.	11.7	7.7	8
30 Tessa Rohl	G	5-7	Fr.	1.0	1.0	0
31 Chantele Melgaard	G	5-9	Sr.	5.7	3.3	11
33 Kelli Hilt	G	5-6	Fr.	3.0	2.0	4
34 Caitlin Hunstock	P	5-10	Jr.	4.0	2.0	2
40 Kelsie Flansch	P	6-0	Fr.	9.0	5.0	1
42 Meghan Hunstock	P	5-11	Jr.	2.5	1.0	2
43 Krista Cordes	G	5-9	Sr.	6.7	1.3	5
44 Megan Lindman	P	6-0	Sr.	14.3	4.7	3

D3Hoops.Com Preseason Poll

No.	School	Record(05-06)	Points	Lt/Yr	Rank
1	Scranton (15)	31-2	612		3
2	Bowdoin (1)	27-3	533		4
3	DePauw (2)	29-2	530		5
4	Hope (7)	33-1	529		1
5	Wheaton (Ill.)	25-5	469		11
6	Southern Maine	32-2	465		2
7	Hardin-Simmons	24-7	405		7
8	Mary Washington	29-2	392		10
9	Baldwin-Wallace	27-5	377		9
10	Messiah	26-3	335		16
11	UW-Stout	22-8	283		14
12	Washington U.	25-3	279		6
13	Calvin	23-5	273		—
14	Rochester	20-8	268		19
15	Brandeis	20-5	245		15
16	Pacific Lutheran	24-4	221		12
17	Williams	23-6	219		17
18	Howard Payne	24-5	186		22
19	St. Benedict	21-6	158		—
20	McMurry	26-3	157		18
21	Bridgewater (Va.)	24-7	141		23
22	Trinity (Texas)	20-8	112		—
23	UW-La Crosse	19-8	109		—
24	Medaille	26-2	83		24
25	Puget Sound	23-6	82		—

2006-07 PLAYERS OF THE WEEK

Date	Name
Nov. 27	Megan Lindman, Senior, Rochester, Minn. Mayo HS

2006-07 FALCON STARTING LINEUPS

Date	Opponent	Forward	Forward	Forward	Guard	Guard
Nov. 21	Hamline	Reimann	Cordes	Lindman	Preiner	Melgaard
Nov. 15	Augsburg	Reimann	Cordes	Lindman	Preiner	Melgaard
Nov. 25	St. Thomas	Reimann	Cordes	Lindman	Preiner	Melgaard
Nov. 29	Superior					
Dec. 2	Stevens Point					
Dec. 6	at Eau Claire					
Dec. 9	Platteville					
Dec. 13	at Macalester					
Dec. 15	at Northwestern					
Dec. 29	Drew^					
Dec. 30	Wesleyan^					
Jan. 2	Finlandia					
Jan. 4	at St. Scholastica					
Jan. 6	at Whitewater					
Jan. 10	at Stout					
Jan. 13	Oshkosh					
Jan. 17	at La Crosse					
Jan. 20	at Stevens Point					
Jan. 24	at Superior					
Jan. 27	at Oshkosh					
Jan. 31	Stout					
Feb. 3	at Platteville					
Feb. 7	Eau Claire					
Feb. 10	Whitewater					
Feb. 14	LaCrosse					
Feb. 19	WIAC Tournament					
^ at Phoenix Tournament						

THE LAST TIME THEY MET

UW-River Falls vs. UW-Superior Jan. 25, 2006 at River Falls, Wis. River Falls 56, Superior 46

The Falcons beat UW-Superior Wednesday night 56-46 at the Karges Center.

River Falls was led by Traci Reimann who had 15 points and a dominating 17 rebounds. Melanie Preiner added 13 points and three steals and Jana Benitz came off the bench to score nine points. Kim Sorenson added six assists to lead the Falcons.

The first half started out with the early lead and they never looked back leading by as much as 25-10 in the first half after a Miranda Biteler three-pointer. The Falcons led at half 27-16.

The second half RF pushed the lead to 33-19 after another Biteler three-pointer with 16:48 left in the game. After a 6-0 Yellow Jackets run to cut the lead to 38-32 RF, the Falcons went on another run to put the game away for good going up 47-35 on a Reimann layup with 6:56 left in the game. The Falcons won 56-46.

River Falls shot the ball well from the field making 37.9 percent (22-58). The Falcons shot 23.5 percent from the three point line (4-17) and 47.1 percent from the free throw line (8-17).

Superior was led by Katie Moench who had 19 points and Molly Ray added 11 points for the Yellow Jackets. For the game Superior shot 33.3 percent (19-57).

UW-River Falls vs. UW-Stevens Point Jan. 21, 2006 at River Falls, Wis. Stevens Point 55, River Falls 46

The Falcons welcomed UW-Stevens Point to Karges on Saturday afternoon and came up short, 55-46.

River Falls did not receive the usual scoring output they expect from their players. Traci Reimann scored only six points to go along with nine boards. With Reimann kept under wraps, the Falcons had to look elsewhere. River Falls was led by Megan Lindman's 16 points followed by Melanie Preiner's 12. Minus Lindman and Preiner, no Falcons scored above six points.

The first half started out rocky for the Falcons as they got behind early. The Pointers controlled the game with the 12-2 lead until Falcon Miranda Biteler cashed a triple with 14:26 remaining in the half. The Falcon defense went into lock down mode and held UWSP at the 12 point park until the Falcons were able to take the lead, 13-12. The Falcon lead would be short lived as the Pointers went on a 17-7 run to close out the half. River Falls went into the locker room trailing 29-20.

The second half involved slightly more scoring for the Falcons but they could not keep the SP lead in single digits. The game was slow and every trip down the floor was a possession battle. Because of the pace, the Falcons were not able to gather themselves and make a quick run. The game concluded with the Pointers taking the nine point victory.

Career, Individual Statistics

Katie Sheets - #10

G, 5-6, Fr., Lakeville, MN/North

Year	G	FG	FGA	PCT	3FG	FGA	PCT	FT	FTA	PCT	REB	AVE	A	ST	TO	BS	PTS	AVE
------	---	----	-----	-----	-----	-----	-----	----	-----	-----	-----	-----	---	----	----	----	-----	-----



Janelle Daniels - #12

G, 5-3, So., Hudson, WI

Year	G	FG	FGA	PCT	3FG	FGA	PCT	FT	FTA	PCT	REB	AVE	A	ST	TO	BS	PTS	AVE
2006-07	2	1	3	.333	1	2	.500	0	0	.000	1	.5	1	1	1	0	3	1.5



Melanie Preiner - #20

G, 5-6, Sr., Stillwater, MN

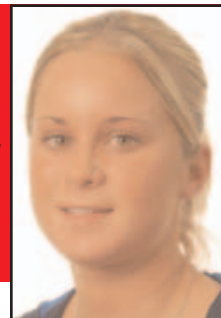
Year	G	FG	FGA	PCT	3FG	FGA	PCT	FT	FTA	PCT	REB	AVE	A	ST	TO	BS	PTS	AVE
2006-07	3	7	17	.412	5	10	.500	12	18	.667	12	4.0	7	9	11	2	35	11.7
2005-06	26	103	268	.382	55	161	.342	40	49	.816	123	4.7	88	73	71	9	301	11.6
2004-05	25	63	173	.364	33	95	.347	15	21	.714	85	3.4	73	63	50	3	174	7.0
2003-04	26	43	106	.406	20	60	.333	3	8	.375	95	3.7	34	40	38	2	109	4.2
Totals	80	216	564	.382	113	326	.346	70	96	.729	315	3.9	198	185	170	16	610	7.7



Kim Sorenson - #21

G, 5-4, Jr., Blaine, MN

Year	G	FG	FGA	PCT	3FG	FGA	PCT	FT	FTA	PCT	REB	AVE	A	ST	TO	BS	PTS	AVE
2006-07	3	4	9	.444	2	5	.400	2	3	.667	4	1.3	3	7	3	0	12	4.0
2005-06	26	20	72	.278	2	11	.182	13	23	.565	51	2.0	42	34	52	5	55	2.1
2004-05	8	5	19	.263	0	2	.000	3	6	.500	8	1.0	7	12	12	2	13	1.6
Total	37	29	100	.290	4	18	.222	18	32	.562	63	1.7	52	53	67	7	80	2.1



Visit the Falcons on The Web

www.uwrf.edu/sports/sports0607/wbb_menu.htm

Career, Individual Statistics

Krystal Parr - #22

G, 5-4, Fr., Bloomer, WI

Year	G	FG	FGA	PCT	3FG	FGA	PCT	FT	FTA	PCT	REB	AVE	A	ST	TO	BS	PTS	AVE
2006-07	2	0	3	.000	0	2	.000	0	0	.000	1	.5	1	0	0	0	0	.0



Jana Benitz - #23

G, 5-7, Jr., Plum City, WI

Year	G	FG	FGA	PCT	3FG	FGA	PCT	FT	FTA	PCT	REB	AVE	A	ST	TO	BS	PTS	AVE
2006-07	2	1	3	.333	0	1	.000	0	2	.000	6	3.0	1	0	1	2	2	1.0
2005-06	19	30	76	.395	10	33	.303	23	31	.742	45	2.4	16	17	23	0	93	4.9
Totals	21	31	79	.392	10	34	.294	23	33	.696	51	2.4	17	17	24	2	95	4.5



Justine Speckel - #24

G, 5-10, So., Buffalo, MN

Year	G	FG	FGA	PCT	3FG	FGA	PCT	FT	FTA	PCT	REB	AVE	A	ST	TO	BS	PTS	AVE
2006-07	2	0	2	.000	0	0	.000	0	2	.000	0	.0	0	0	0	0	0	.0
2005-06	7	1	4	.250	0	0	.000	1	2	.500	3	.4	0	2	1	0	3	.4
Totals	9	1	4	.250	0	0	.000	1	4	.250	3	.3	0	2	1	0	3	.3



Traci Reimann - #25

P, 6-0, Sr., North Branch, MN

Year	G	FG	FGA	PCT	3FG	FGA	PCT	FT	FTA	PCT	REB	AVE	A	ST	TO	BS	PTS	AVE
2006-07	3	16	28	.571	0	4	.000	3	9	.333	23	7.7	8	7	11	2	35	11.7
2005-06	21	112	226	.496	5	22	.227	69	122	.566	221	10.5	49	37	72	5	298	14.2
2004-05	25	95	202	.470	16	41	.390	55	72	.764	152	6.1	28	25	75	10	261	10.4
2003-04	26	95	230	.413	8	39	.205	39	66	.591	213	8.2	52	37	77	11	237	9.1
Totals	75	318	686	.463	29	106	.273	176	269	.654	609	8.1	137	106	235	28	831	11.0



Visit the Falcons on The Web

www.uwrf.edu/sports/sports0607/wbb_menu.htm

Career, Individual Statistics

Tessa Rohl - #30

G, 5-7, Fr., Buffalo, MN

Year	G	FG	FGA	PCT	3FG	FGA	PCT	FT	FTA	PCT	REB	AVE	A	ST	TO	BS	PTS	AVE
2006-07	2	0	0	.000	0	0	.000	2	2	1.000	2	1.0	0	0	0	0	2	1.0



Chantele Melgaard - #31

G, 5-9, Sr., Lakeville, MN

Year	G	FG	FGA	PCT	3FG	FGA	PCT	FT	FTA	PCT	REB	AVE	A	ST	TO	BS	PTS	AVE
2006-07	3	5	22	.227	2	11	.182	5	8	.625	10	3.3	11	5	6	0	17	5.7
2004-05	25	67	222	.302	27	94	.287	54	87	.621	132	5.3	53	73	88	6	215	8.6
2003-04	18	42	132	.318	23	58	.397	37	50	.740	52	2.9	29	22	55	10	144	8.0
2002-03	25	54	178	.303	17	50	.340	54	83	.651	106	4.2	59	59	17	15	179	7.2
Totals	71	168	554	.303	69	213	.323	149	228	.653	300	4.2	152	159	166	31	555	7.8



Kelli Hilt - #33

G, 5-6, Fr., Lakeville, MN/North

Year	G	FG	FGA	PCT	3FG	FGA	PCT	FT	FTA	PCT	REB	AVE	A	ST	TO	BS	PTS	AVE
2006-07	3	2	9	.222	1	5	.200	4	5	.800	6	2.0	4	2	4	0	9	3.0



Caitlin Hunstock - #34

P, 5-10, Jr., Minneapolis, MN/South

Year	G	FG	FGA	PCT	3FG	FGA	PCT	FT	FTA	PCT	REB	AVE	A	ST	TO	BS	PTS	AVE
2006-07	2	4	8	.500	0	2	.000	0	0	.000	4	2.0	2	1	3	1	8	4.0
2005-06	22	9	32	.281	2	17	.118	3	5	.600	26	1.2	6	4	16	1	23	1.0
Totals	24	13	40	.325	2	19	.105	3	5	.600	30	1.2	8	5	19	2	31	1.2



Visit the Falcons on The Web

www.uwrf.edu/sports/sports0607/wbb_menu.htm

Career, Individual Statistics

Kelsie Flanscha - #40

P, 6-0, Fr., River Falls, WI

Year	G	FG	FGA	PCT	3FG	FGA	PCT	FT	FTA	PCT	REB	AVE	A	ST	TO	BS	PTS	AVE
2006-07	3	10	16	.625	0	0	.000	7	12	.583	15	5.0	1	7	8	4	27	9.0



Meghan Hunstock - #42

P, 5-11, Jr., Minneapolis, MN/South

Year	G	FG	FGA	PCT	3FG	FGA	PCT	FT	FTA	PCT	REB	AVE	A	ST	TO	BS	PTS	AVE
2006-07	2	1	2	.500	0	0	.000	3	6	.500	2	1.0	2	1	2	0	5	2.5
2005-06	19	12	33	.364	0	6	.000	3	5	.600	22	1.2	2	1	9	0	27	1.4
Totals	21	13	35	.371	0	6	.000	6	11	.545	24	1.1	4	2	11	0	32	1.5



Krista Cordes - #43

G, 5-9, Sr., Farmington, MN

Year	G	FG	FGA	PCT	3FG	FGA	PCT	FT	FTA	PCT	REB	AVE	A	ST	TO	BS	PTS	AVE
2006-07	3	7	18	.389	2	12	.167	4	4	1.000	4	1.3	5	1	6	1	20	6.7
2005-06	26	77	200	.385	34	99	.343	29	34	.853	119	4.6	39	33	41	19	217	8.3
2004-05	22	23	67	.343	10	41	.244	5	8	.625	18	0.8	6	8	6	3	61	2.8
2003-04	8	4	14	.286	3	6	.500	2	2	1.000	4	0.5	1	0	1	0	13	1.6
Totals	59	111	299	.371	49	158	.310	40	48	.833	145	2.4	51	42	54	23	311	5.2



Megan Lindman - #44

P, 6-0, Sr., Rochester, MN/Mayo

Year	G	FG	FGA	PCT	3FG	FGA	PCT	FT	FTA	PCT	REB	AVE	A	ST	TO	BS	PTS	AVE
2006-07	3	15	26	.577	0	2	.000	13	19	.684	14	4.7	3	3	10	1	43	14.3
2005-06	25	95	213	.446	1	3	.333	34	44	.773	111	4.4	23	31	64	24	225	9.0
2004-05	25	93	204	.456	0	0	.000	36	63	.571	137	5.5	23	35	44	35	222	8.9
2003-04	26	84	178	.472	1	2	.500	41	71	.577	114	4.4	19	26	53	27	210	8.1
Totals	79	287	621	.462	2	7	.285	124	197	.629	376	4.7	68	95	171	87	700	8.8



Visit the Falcons on The Web

www.uwrf.edu/sports/sports0607/wbb_menu.htm

UW-River Falls Basketball
UW-River Falls Combined Team Statistics (as of Nov 26, 2006)
All games

RECORD :	OVERALL	HOME	AWAY	NEUTRAL
ALL GAMES.....	(3-0)	(3-0)	(0-0)	(0-0)
CONFERENCE.....	(0-0)	(0-0)	(0-0)	(0-0)
NON-CONFERENCE.....	(3-0)	(3-0)	(0-0)	(0-0)

## Player	GP-GS	Min--Avg	---TOTAL---		---3-PTS---		---FT-FTA		---Pct		----REBOUNDS----				PF	FO	A	TO	Blk	Stl	Pts	Avg
			FG-FGA	Pct	3FG-FGA	Pct	FT	FTA	Pct	Off	Def	Tot	Avg									
44 Lindman, Megan.....	3-3	79 26.3	15-26	.577	0-2	.000	13-19	.684	5	9	14	4.7	7	0	3	10	1	3	43	14.3		
25 Reimann, Traci.....	3-3	75 25.0	16-28	.571	0-4	.000	3-9	.333	8	15	23	7.7	8	1	8	11	2	7	35	11.7		
20 Preiner, Melanie...	3-3	73 24.3	7-17	.412	5-10	.500	12-18	.667	2	10	12	4.0	7	0	7	6	1	9	31	10.3		
40 Flanscha, Kelsie...	3-0	58 19.3	10-16	.625	0-0	.000	7-12	.583	5	10	15	5.0	9	0	1	8	4	7	27	9.0		
43 Cordes, Krista.....	3-3	72 24.0	7-18	.389	2-12	.167	4-4	1.000	2	2	4	1.3	4	0	5	6	1	5	20	6.7		
31 Melgaard, Chantele.	3-3	77 25.7	5-22	.227	2-11	.182	5-8	.625	5	5	10	3.3	6	1	11	6	0	5	17	5.7		
34 Hunstock, Caitlin...	2-0	17 8.5	4-8	.500	0-2	.000	0-0	.000	0	4	4	2.0	3	0	2	3	1	1	8	4.0		
21 Sorenson, Kim.....	3-0	36 12.0	4-9	.444	2-5	.400	2-3	.667	3	1	4	1.3	6	0	3	3	0	7	12	4.0		
33 Hilt, Kelli.....	3-0	51 17.0	2-9	.222	1-5	.200	4-5	.800	2	4	6	2.0	3	0	4	4	0	2	9	3.0		
42 Hunstock, Meghan...	2-0	12 6.0	1-2	.500	0-0	.000	3-6	.500	0	2	2	1.0	1	0	2	2	0	1	5	2.5		
12 Daniels, Janelle...	2-0	10 5.0	1-3	.333	1-2	.500	0-0	.000	0	1	1	0.5	1	0	1	1	0	1	3	1.5		
30 Rohl, Tessa.....	2-0	7 3.5	0-0	.000	0-0	.000	2-2	1.000	1	1	2	1.0	1	0	0	0	0	0	2	1.0		
23 Benitz, Jana.....	2-0	13 6.5	1-3	.333	0-1	.000	0-2	.000	3	3	6	3.0	4	0	1	1	2	0	2	1.0		
22 Parr, Krystal.....	2-0	16 8.0	0-3	.000	0-2	.000	0-0	.000	1	0	1	0.5	2	0	1	0	0	0	0	0.0		
24 Speckel, Justine...	2-0	4 2.0	0-2	.000	0-0	.000	0-2	.000	0	0	0	0.0	1	0	0	0	0	0	0	0.0		
TEAM.....									0	5	5	1.7	0			0						
Total.....	3	600	73-166	.440	13-56	.232	55-90	.611	37	72	109	36.3	63	2	49	61	12	48	214	71.3		
Opponents.....	3	600	39-139	.281	6-34	.176	55-75	.733	39	78	117	39.0	78	-	11	93	3	23	139	46.3		

TEAM STATISTICS	RF	OPP	DATE	OPPONENT	W/L	SCORE	ATTEND
SCORING.....	214	139	Nov. 21	HAMLINE UNIVERSITY	W	76-51	197
Points per game.....	71.3	46.3	Nov. 25	AUGSBURG COLLEGE	W	80-40	173
Scoring margin.....	+25.0	-	Nov. 26	ST. THOMAS	W	58-48	170
FIELD GOALS-ATT.....	73-166	39-139					
Field goal pct.....	.440	.281					
3 POINT FG-ATT.....	13-56	6-34					
3-point FG pct.....	.232	.176					
3-pt FG made per game..	4.3	2.0					
FREE THROWS-ATT.....	55-90	55-75					
Free throw pct.....	.611	.733					
REBOUNDS.....	109	117					
Rebounds per game.....	36.3	39.0					
Rebounding margin.....	-2.7	-					
ASSISTS.....	49	11					
Assists per game.....	16.3	3.7					
TURNOVERS.....	61	93					
Turnovers per game.....	20.3	31.0					
Turnover margin.....	+10.7	-					
Assist/turnover ratio..	0.8	0.1					
STEALS.....	48	23					
Steals per game.....	16.0	7.7					
BLOCKS.....	12	3					
Blocks per game.....	4.0	1.0					
WINNING STREAK.....	3	-					
Home win streak.....	3	-					
ATTENDANCE.....	540	0					
Home games-Avg/Game...	3-180	0-0					
Neutral site-Avg/Game..	-	0-0					

SCORE BY PERIODS:	1st	2nd	Total
UW-River Falls.....	107	107	-
Opponents.....	55	84	-