

2005-06 UW-River Falls Basketball

General Information

School: UW - River Falls

Location: River Falls, Wis.

Address: 410 S. Third St.
River Falls, WI 54022

Founded: 1874

Enrollment: 5,800

Nickname: Falcons

School colors: Red and White

Home Court/capacity: 2,000

Affiliation: NCAA Div. III

Conference: Wisconsin Intercollegiate Athletic Conference

Athletic director: Rick Bowen (715-425-3246)

Athletic trainer: Gary Eloranta (715-425-3130)

Sports information director: Jim Thies (715-425-3846)

Basketball History

First year of basketball: Stats date back to 1976

WIAC Championships: (2) 1988, 1989

Coaching Staff

Head Coach: Cindy Hovet

Alma Mater: UW-Stout

Record at School: 79-70

Career Record: 79-70

Vs Eau Claire: 4-10

Vs. Whitewater: 5-6

Assistant Coaches: Kathy Holbrook, Mara Reif-Wenner

Team Information

Overall 2004-05 Record: 17-8

2004-05 Record at Home: 8-3

2004-05 Record on Road: 8-5

WIAC record, finish: 10-6, 4th

Letter Winners returning, lost: 7/9

UW-River Falls (11-11, 7-6 WIAC)

vs.

UW-Eau Claire (10-11, 5-7 WIAC)

Wednesday, Feb. 8, 2006, 7 p.m.
Zorn Arena, Eau Claire, Wis.

vs.

UW-Whitewater (11-10, 5-7 WIAC)

Saturday, Feb. 11, 2006, 1 p.m.
Williams Center, Whitewater, Wis.

The Games

UW-River Falls enters the second to last week of play in the regular season with games at UW-Eau Claire on Wednesday and at UW-Whitewater on Saturday.

-UWRF has won three of its last four games and looks to pick up even more ground in the WIAC standings with two more games this week. It won't be easy though with all three of the team's final games on the road where the Falcons are only 1-8 this year. Plus, leading scorer and rebounder Traci Reimann (14.2 points per game, 10.5 rebounds per game) sat out the team's win over Platteville with an injury. Also out was Jana Benitz (4.9 points per game, 2.4 rebounds per game) who gave the Falcons plenty of help this year coming off the bench. Melanie Preiner is second in scoring for the Falcons (12.0) with Miranda Biteler (10.0) third. Megan Lindman will be looked at to pick up the rebounding - she averages 4.5 per game.

-UWEC has played better ball in the second half of the season and has won five of its past seven games. The Blugolds, who did not play last Saturday, last lost to UW-Stevens Point (68-54) on Feb. 1. The Blugolds have also had their share of injury problems. The leading scorer is freshman Brittanni Hakanson (10). She is the only UWEC player averaging in double figures. She is also the top rebounder (4.7) and is the only Blugold in the top 20 in rebounding in the WIAC.

-UWW is led in scoring by Lindsey Buechner (14.1). Amy Morris is a close second (12.2). Jessica Wendt (6.6) and Buechner (6.5) are the top rebounds and are ranked sixth and seventh in the WIAC. UWW has won two of its last three games, including a 63-57 win over UW-Stout on Jan. 28. On Saturday the Warhawks won at UW-Superior, 95-75 led by Morris' 27 points and eight rebounds.

2006 WIAC Basketball Information

WIAC STANDINGS

as of Feb. 6, 2006

	WIAC W-L	Overall W-L
Stevens Point	9-3	16-5
Oshkosh	9-4	15-7
Stout	9-4	14-7
River Falls	7-6	11-11
La Crosse	7-6	16-6
Whitewater	5-7	11-10
Eau Claire	5-7	10-11
Platteville	5-7	9-11
Superior	0-12	4-16

Upcoming games:

Wednesday, Feb 8

River Falls at Eau Claire, 7 p.m.
Platteville at La Crosse, 5:45 p.m.
Stout at Superior, 7 p.m.
Stevens Point at Whitewater, 7 p.m.

Saturday, Feb 11

River Falls at Whitewater, 1 p.m.
Stevens Point at Stout, 3 p.m.
Eau Claire at Oshkosh, 3 p.m.
Superior at Platteville, 1 p.m.

Recent results:

Saturday, Feb. 4

River Falls 50, Platteville 47
Stevens Point 71, La Crosse 56
Stout 88, Oshkosh 73
Whitewater 95, Superior 75

Wednesday, Feb. 1

Stout 64, River Falls 56
Stevens Point 68, Eau Claire 54
Platteville 59, Whitewater 56
Oshkosh 62, La Crosse 55

Tuesday, Jan. 31

Superior 51, Northland 45

Preseason SID Poll

	04-05 Record
1. Stout (8)	(24-7, 12-4)
2. Oshkosh (1)	(22-6, 11-5)
3. Stevens Point	(21-6, 12-4)
4. Eau Claire	(16-11, 8-8)
5. River Falls	(17-8, 10-6)
6. Whitewater	(14-12, 7-9)
7. La Crosse	(11-15, 4-12)
8. Platteville	(13-13, 6-10)
9. Superior	(5-20, 2-14)

UW-RF's Record When...

	04-05	05-06
Ahead at the half	14-3	10-2
Behind at the half	3-5	1-8
Tied at the half	0-0	0-1
Better FG% than opponent	12-2	9-3
Worse FG% than opponent	5-6	2-8
Same FG% as opponent	0-0	0-0
Try more than 15 3FG's	8-5	8-9
Try less than 15 3FG's	9-3	3-2
Shoot more FT's than opp.	9-2	6-0
Shoot less FT's than opp.	8-6	3-11
Shoot same FT's than opp.	0-0	2-0
Outrebound opp.	9-3	8-3
Tied or outrebounded by opp.	8-5	3-8
More turnovers than opp.	5-5	2-6
Less turnovers than opp.	12-3	7-5
Same amount of TO's	0-0	2-0
Score less than 50 pts.	1-2	0-1
Score 50-59 pts.	2-2	2-6
Score 60-69 pts.	9-4	4-3
Score 70-79 pts.	4-0	4-1
score 80+ pts.	1-0	1-0
Allow less than 50 pts.	6-0	5-1
Allow 50-59 pts.	7-2	3-0
Allow 60-69 pts.	4-5	2-7
Allow 70-79 pts.	0-0	1-3
Allow 80+ pts.	0-1	0-0
Overtime	1-1	0-1
Home games	8-3	9-3
Road games	8-5	1-8
Neutral site games	1-0	1-0

UWRF Sports Information

Director: Jim Thies
Phone: 715-425-3846
Home: 715-386-9252
Cell: 715-222-1455
Fax: 715-425-4486
Email: james.g.thies@uwrf.edu
Web: www.uwrf.edu/sports

UW-Eau Claire Sports Information

Director: Tim Petermann
Phone: 715-836-4184
Fax: 715-836-4074
Email: petermta@uwec.edu
Web: www.uwec.edu/Athletics/

UW-Whitewater Sports Information

Director: Tom Fick
Phone: 262-472-1147
Fax: 2620472-5656
Email: fickt@uww.edu
Web: www.uww.edu/athletics/index.cfm



UNIVERSITY OF WISCONSIN-RIVER FALLS

Head Coach - Cindy Hovet

Cindy Hovet enters her sixth year as the head basketball coach at UW-River Falls with the 2005-06 season.

Hovet was inducted into the UW-Stout Athletic Hall of Fame in November. She is the only person who has been named a WIAC Coach of the Year (2001) and named a WIAC Player of the Year (1994).

The 2004-05 Falcons had another fine season finishing 17-8 overall and 10-6 and in fourth place in the highly competitive WIAC. The 17 wins and 10 WIAC victories were the second most by a Hovet coached team. She needs just six wins to reach 75 in her career. She has coached five players who have received All-WIAC honors; including Erin Effle who was the 2005 WIAC women's basketball Scholar-Athlete.

The 2003-04 season concluded with a 13-13 overall record, and 4-12 in the WIAC. Although the team didn't do as well in conference play as they had hoped, they managed to put together a perfect 9-0 non-conference record. That perfect record included impressive victories against two NCAA national tournament qualifiers, Lakeland College (22-6) and Maryville University (23-3). Both Lakeland and Maryville went undefeated and were champions of their respective conferences, which again highlights the strength and parity in the WIAC where the Falcons finished seventh in 2003-04.

The Falcons will take on another strong schedule in 2005-06. Besides facing each of the WIAC teams twice, the Falcons have nine non-conference games. The Falcons will play at St. Thomas on Nov. 27. The Tommies have won more MIAC titles (10) than any other institution. The Falcons also play a road game at NCAA Div. II Winona State (Dec. 11). In all the Falcons play six games against teams that were either ranked or earned votes in the D3hoops.com preseason Top 25 poll.

The two years prior to last season, the Falcons have finished in sixth place in the WIAC with a 10-15 overall record in 2002-03 and 11-15 in 2001-02. Hovet's first season at the helm for UWRF was the program's most successful since 1988-89. With an 18-8 overall record, they tied for third place in the conference. Hovet was named the WIAC Coach of the Year for the team's accomplishments that season.

Hovet was the UWRF head tennis coach and assistant basketball coach for five years before taking over the basketball program in 2000-01. Her playing career was also in the WIAC. As a student-athlete at UW-Stout she was a two-time All-WIAC first team selection in 1993 and 1994. Her senior season she was named the 1994 WIAC Player of the Year and earned All-American honors. She was named to the second All-WIAC team in 1992. She helped the Blue Devils to a 76-27 record and berths in both the NCAA Division III and NAIA National Tournaments for four seasons.

Hovet received her Psychology undergraduate degree and Coaching minor from UW-Stout. She completed here Master's Degree in Kinesiology with an emphasis in Sport Psychology and Sociology at the University of Minnesota. She currently teaches at UWRF in the health & human performance department along with her coaching duties.



Year	W	L	Pct	WIAC Place
2005-06	11	11	.500	7-6
2004-05	17	8	.680	10-6, 4th
2003-04	13	13	.500	4-12, tie 7th
2002-03	10	15	.400	4-12, tie 6th
2001-02	11	15	.423	5-11, tie 6th
2000-01	18	8	.692	11-5, tie 3rd
Totals	79	70	.530	40-51, .439



2005-06 Statistics, 2005-06 Schedule and Results

Name	GP	GS	MIN	AVG	FG	FGA	PCT	3FG	FGA	PCT	FT	FTA	PCT	OR	DR	TR	AVG	PF	FO	A	TO	BK	ST	PTS	AVG	
Traci Reimann	21	21	669	31.9	112	226	.496	5	22	.227	69	122	.566	77	144	221	10.5	41	1	49	72	5	37	298	14.2	
Melanie Preiner	22	22	736	33.5	91	237	.384	48	139	.345	34	41	.829	46	64	110	5.0	63	1	78	60	8	66	264	12.0	
Miranda Biteler	22	22	671	30.5	77	224	.344	37	100	.370	29	41	.707	27	51	78	3.5	45	1	69	73	4	26	220	10.0	
Megan Lindman	21	20	534	25.4	81	177	.458	1	2	.500	30	40	.750	26	68	94	4.5	60	1	22	48	22	25	193	9.2	
Krista Cordes	22	19	578	26.3	66	174	.379	30	85	.353	21	26	.808	42	48	90	4.1	52	0	35	30	12	28	183	8.3	
Jana Benitz	19	0	298	15.7	30	76	.395	10	33	.303	23	31	.742	24	21	45	2.4	31	0	16	23	0	17	93	4.9	
Kim Sorenson	22	3	417	19.0	19	63	.302	2	7	.286	10	19	.526	15	31	46	2.1	37	1	40	47	4	25	50	2.3	
Chisato Nakaike	21	3	225	10.7	12	47	.255	7	22	.318	3	7	.429	6	7	13	0.6	11	0	14	15	1	4	34	1.6	
Meghan Hunstock	15	0	88	5.9	10	27	.370	0	2	.000	3	5	.600	5	14	19	1.3	9	0	2	8	0	1	23	1.5	
Jodi Kauth	6	0	25	4.2	4	8	.500	0	0	.000	1	5	.200	5	6	11	1.8	0	0	0	6	0	2	9	1.5	
Caitlin Hunstock	18	0	117	6.5	9	29	.310	2	14	.143	3	5	.600	8	16	24	1.3	11	0	4	15	0	4	23	1.3	
Kendra Sticha	4	0	49	12.3	1	6	.167	0	0	.000	1	3	.333	3	7	10	2.5	5	0	0	2	0	1	3	0.8	
Justine Speckel	6	0	14	2.3	1	3	.333	0	0	.000	0	0	.000	0	2	2	0.3	3	0	0	1	0	2	2	0.3	
Team														35	38	73	3.5				17					
Total	22					513	1301	.394	142	430	.330	227	345	.658	320	518	838	38.1	368	5	329	418	56	238	1395	63.4
Opponents	22					446	1149	.388	122	364	.335	273	380	.718	239	536	775	35.2	365	5	269	462	62	179	1287	58.5

11-10 overall, 7-6 WIAC Home 9-3, Away 1-7, Neutral 1-0

Date	W/L	Score	Opponent	Leading scorers	Leading rebounders
Nov. 18	W	95-61	Finlandia [^]	Lindman 18, Biteler 18	Reimann 16, Preiner 9
Nov. 19	L	63-54	Kalamazoo [^]	Reimann 17	Reimann 12, Preiner 7
Nov. 22	L	65-53	at Hamline	Cordes 12, Biteler 10	Reimann 8, Biteler 6
Nov. 26	W	75-71	Viterbo	Reimann 25, Preiner 16	Reimann 13, three tied w/3
Nov. 27	L	64-66(OT)	at St. Thomas	Biteler 16, Reimann 15	Reimann 11, two tied w/6
Nov. 30	W	70-53	at Superior*	Preiner 20, Lindman 14	Reimann 7, Benitz 6
Dec. 3	L	71-60	at Stevens Point*	Preiner 15, two w/13	Reimann 6, three w/5
Dec. 7	W	72-61	Eau Claire*	Preiner 18, two w/13	Reimann 9, Cordes 7
Dec. 10	L	63-61	at Platteville	Reimann 23, Benitz 13	Reimann 12, Lindman 7
Dec. 11	L	66-59	at Winona	Reimann 16, Cordes 15	Reimann 7, two w/6
Dec. 14	W	65-29	Macalester	Preiner, Reimann 10	Kauth 10, Reimann 9
Dec. 16	W	62-32	Northwestern	Reimann 16, Preiner 14	Preiner, Cordes 8 each
Jan. 2	L	69-56	St. Scholastica	Reimann 15, Preiner 10	Preiner 14, Reimann 9
Jan. 7	W	69-59	Whitewater*	Cordes 24, Preiner 13	Reimann 12, Cordes 7
Jan. 11	L	71-59	Stout*	Reimann 27, Preiner 10	Reimann 8
Jan. 14	L	75-72	at Oshkosh*	Biteler 26, Reimann 14	Reimann 16, Biteler 7
Jan. 18	W	74-52	La Crosse*	Preiner 20, Lindman 17	Reimann 7
Jan. 21	L	55-46	Stevens Point*	Lindman 16, Preiner 12	Reimann 9, Preiner 7
Jan. 25	W	56-46	Superior*	Reimann 15, Preiner 13	Reimann 17, Lindman 5
Jan. 28	W	67-48	Oshkosh*	Cordes 14, Lindman 13	Reimann 14
Feb. 1	L	64-56	at Stout*	Biteler 15, Reimann 13	Reimann 13
Feb. 4	W	50-47	Platteville*	Biteler 15	Lindman 7
Feb. 8			at Eau Claire*, 7 p.m.		
Feb. 11			at Whitewater*, 1 p.m.		
Feb. 15			at La Crosse*, 7 p.m.		

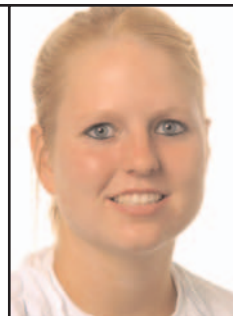
[^] at Kalamazoo Tournament

* WIAC Games

Last Week's Results

On Wednesday at Stout the Blue Devils outscored the Falcons, 36-25, in the second half to get a 64-56 come-from-behind win. Miranda Biteler led the Falcons with 15 points. She had two assists and two steals. Traci Reimann had her ninth double-double, and third in a row, of the season. She scored 13 points and grabbed 13 rebounds. Melanie Preiner scored nine points and had one assist, three rebounds and three steals. UWRF shot 20-46 (.435) from the field, including 7-18 (.389) from behind the arc. The Falcons were 9-11 (.818) from the line. UWRF held a 31-28 lead at the half.

On Saturday at the Karges Center the Falcons got 15 points from Miranda Biteler and defeated UW-Platteville, 50-47. Biteler finished 5-7 from the field, including a perfect 3-3 from behind the arc and 2-2 at the line. She also had five rebounds, one assist to two blocks. Krista Cordes and Megan Lindman each scored 10 points. Lindman led the Falcons with seven rebounds and five blocks. Cordes finished with six rebounds, three assists and two blocks. Melanie Preiner scored nine points, had five rebounds and she led the Falcons with four steals. The Falcons played without leading scorer (14.2) and rebounder (10.5), Traci Reimann, and Jana Benitz, who is sixth on the team in scoring (4.9). Both were injured and did not suit up for the game.



Krista Cordes



Miranda Biteler

2005-06 UW-River Falls Women's Basketball Roster

as of Jan. 26 - Numerical

No	Name	Pos.	Hgt.	Yr.	Hometown/High School
12	Miranda Biteler	G	5-8	Sr.	Chanhassen, MN/Chaska
14	Chisato Nakaike	G	5-8	Sr.	Fukui, Japan/Shogyo
20	Melanie Preiner	G	5-6	Jr.	Stillwater, MN
21	Kim Sorenson	G	5-4	So.	Blaine, MN
23	Jana Benitz	G	5-7	So.	Plum City, WI
24	Justine Speckel	G	5-10	Fr.	Buffalo, MN
25	Traci Reimann	P	6-0	Jr.	North Branch, MN
34	Caitlin Hunstock	P	5-10	So.	Minneapolis, MN/South
35	Kendra Sticha	P	6-0	Jr.	New Prague, MN
40	Jodi Kauth	P	6-0	Fr.	Granton, WI
42	Meghan Hunstock	P	5-11	So.	Minneapolis, MN/South
43	Krista Cordes	G	5-9	Jr.	Farmington, MN
44	Megan Lindman	P	6-0	Jr.	Rochester, MN/Mayo

Head coach: Cindy Hovet

Assistant coaches: Kathy Holbrook, Mara Reif-Wenner

Mangers: Janelle Yang-Fellenz, Lori Klevem, Amanda Conrad

2005-06 UW-River Falls Women's Basketball Roster - Alphabetical

No	Name	Pos.	Hgt.	Yr.	Hometown/High School
23	Jana Benitz	G	5-7	So.	Plum City, WI
12	Miranda Biteler	G	5-8	Sr.	Chanhassen, MN/Chaska
43	Krista Cordes	G	5-9	Jr.	Farmington, MN
34	Caitlin Hunstock	P	5-10	So.	Minneapolis, MN/South
42	Meghan Hunstock	P	5-11	So.	Minneapolis, MN/South
40	Jodi Kauth	P	6-0	Fr.	Granton, WI
44	Megan Lindman	P	6-0	Jr.	Rochester, MN/Mayo
14	Chisato Nakaike	G	5-8	Sr.	Fukui, Japan/Shogyo
20	Melanie Preiner	G	5-6	Jr.	Stillwater, MN
25	Traci Reimann	P	6-0	Jr.	North Branch, MN
21	Kim Sorenson	G	5-4	So.	Blaine, MN
24	Justine Speckel	G	5-10	Fr.	Buffalo, MN
35	Kendra Sticha	P	6-0	Jr.	New Prague, MN

UW-River Falls vs. UW-Eau Claire -- Last Meeting

Dec. 7, 2005 at Karges Center, River Falls, Wis.

River Falls 72, Eau Claire 61

The Falcons beat UW-Eau Claire Wednesday night 72-61 at the Karges Center.

RF was led by Melanie Preiner who had a team high 18 points and four assists in 35 minutes of action. Miranda Biteler and Megan Lindman also chipped with 13 points each. Biteler also added six assists and four rebounds. Traci Reimann had a team high nine rebounds.

In the first half, RF took the early lead 9-2 only two minutes into the game. Eau Claire responded and took the lead 20-16 with 7:50 left in the half, but RF came back and took a 31-28 lead into recess.

In the second half, RF took over with an 8-0 run to start the second half capped by a Reimann jumper. The Falcons never looked back. They got the lead all the way up to 62-45 with 7:25 left in the game. RF cruised to an easy 72-61 win to improve to 2-1 in conference.

For the game, RF shot 40 percent (28-70) and 100 percent (7-7) from the free throw line. RF shot 29 percent (9-31) from the three point line. Eau Claire shot 42.6 percent (23-54) from the field.

Eau Claire was led by Michelle Burns who had 17 points and seven rebounds. Ashley Anderson came off the bench to score nine points for the Blugolds.

UW-River Falls vs. UW-Whitewater -- Last Meeting

Jan. 7, 2006 at Karges Center, River Falls, Wis.

River Falls 69, Whitewater 59

The Falcons welcomed UW-Whitewater to Karges and evened their overall record with a win, 69-59.

The story of the night for the Falcons was Krista Cordes. Cordes dropped a career high 24 points which included five field goals from long range. Cordes also added seven rebounds to help River Falls to their third conference win. Melanie Preiner also made a strong effort and scored 13 points while pulling down five boards.

The first half was an up and down battle and neither team built a concrete lead. UW-Whitewater took the lead early, 8-5, when Lindsay Gerber put home a layup. The three point lead would be the Warhawks biggest lead of the game. Both teams went scoreless for the next four minutes until Miranda Biteler hit a long range three pointer that put the Falcons in the lead, 10-8. Cordes made her first three of the game when she knocked one down with 6:12 remaining in the half. Two minutes later Cordes dropped another tray which gave River Falls the 23-19 lead. The Falcons would go into the half looking at a 26-23 lead over the Warhawks.

The second half was blemished with fouls upon fouls. The pace of the game was slowed down and the game turned into an almost two hour contest. Free throws decided the game where the Falcons made 24 compared to Whitewater's 18. Cordes continued her solid effort with her third three of the game with 9:14 remaining to tie the game at 43. The Warhawks added a layup and a free throw of their own to take a three point lead. The Falcons battled back and Cordes hit her fourth three of the game with 6:16 remaining to put the Falcons up for good, 53-49. The game concluded with River Falls taking 16 free throw attempts and making 13 of them. The Falcons extended their lead to eight points and ended the night with th victory.

River Falls improves their overall record to 7-7 and now have a winning record in conference play, 3-2.

River Falls 72, Eau Claire 61

Game #8

Dec. 7, 2005

At River Falls, Wis.

River Falls (fgm-fga, ftm-fta, pts): Biteler 6-15, 0-0, 13; Preiner 7-15, 0-0, 18; Reimann 2-5, 4-4, 8; Cordes 2-9, 0-0, 6; Lindman 6-10, 1-1, 13; Nakaike 0-1, 0-0, 0; Sorenson 1-7, 0-0, 2; Benitz 3-7, 2-2, 9; C. Hunstock 1-1, 0-0, 3; Totals 28-70, 7-7, 72.

Eau Claire (fgm-fga, ftm-fta, pts): Mueggenborg 3-10, 0-0, 8; Bri. Hakanson 3-4, 0-0, 6; Van Drasek 1-4, 3-3, 4; Burns 7-9, 3-3, 17; Becker 1-5, 0-0, 2; Foschi 0-1, 0-0, 3; Emerson 2-8, 0-0, 6; Bro. Hakanson 3-9, 0-0, 9; Totals 23-54, 8-9, 61.

Rebound Leader: RF Reimann 9; EC Burns, Becker 7

Assist Leader: RF Biteler 6; EC Becker 6

Halftime: RF 31, EC 28

River Falls 69, Whitewater 59

Game #14

Jan. 7, 2006

At River Falls, Wis.

River Falls (fgm-fga, ftm-fta, pts): Bitler 2-12, 3-5, 9; Preiner 2-7, 7-10, 13; Sorenson 1-1, 2-2, 4; Reimann 3-10, 3-5, 9; Cordes 7-10, 5-5, 24, Nakaike 0-3, 0-0, 0; Benitz 2-4, 0-0, 4; Lindman 1-5, 4-5, 6; Totals 18-52, 24-32, 69.

Whitewater (fgm-fga, ftm-fta, pts): Donohoo 4-10, 3-3, 12; Thill 1-3, 3-4, 6; Buechner 6-10, 5-7, 17; Wendt 0-2, 0-0, 0; Nimmer 0-3, 0-0, 0; Cera 0-1, 0-0, 0; Gerber 2-8, 0-0, 4; Brown 0-0, 0-0, 0; Peters 1-6, 2-4, 4; Morris 2-9, 5-6, 10; Schmidt 3-8, 0-1, 6; Totals 19-60, 18-25, 59.

Rebound Leader: W Buechner, Wendt, Peters, Schmidt 7; RF Reimann 12

Assist Leader: W Donohoo 4; RF Sorenson 4

Halftime: RF 26, W 23



Career, Individual Statistics



Miranda Biteler - #12

G, 5-8, Sr., Chanhassen, Minn/Chaska

Year	G	FG	FGA	PCT	3FG	FGA	PCT	FT	FTA	PCT	REB	AVE	A	ST	TO	BS	PTS	AVE
2005-06	22	77	224	.344	37	100	.370	29	41	.707	78	3.5	69	26	73	4	220	10.0
2004-05	25	59	153	.386	18	61	.295	30	36	.833	55	2.2	62	35	80	4	166	6.6
2003-04	26	45	122	.369	18	59	.305	22	29	.759	48	1.8	49	18	78	1	130	5.0
2002-03	15	18	54	.333	9	32	.281	14	20	.700	30	2.0	23	10	26	1	59	3.9
Totals	88	199	553	.359	82	252	.325	95	126	.753	211	2.3	203	89	257	10	575	6.5



Chisato Nakaike - #14

G, 5-8, Sr., Fukui, Japan/Shogyo

Year	G	FG	FGA	PCT	3FG	FGA	PCT	FT	FTA	PCT	REB	AVE	A	ST	TO	BS	PTS	AVE
2005-06	21	12	47	.255	7	22	.318	3	7	.429	13	.6	14	4	15	1	34	1.6
2004-05	15	2	11	.182	0	4	.000	0	1	.000	4	0.3	6	2	4	0	4	0.3
2003-04	2	0	0	.000	0	0	.000	0	0	.000	0	0.0	0	0	0	0	0	0
2002-03	15	7	21	.333	4	14	.286	5	11	.455	8	0.5	5	3	8	2	23	1.5
Totals	53	21	79	.256	11	40	.275	8	19	.421	25	.4	25	8	27	3	61	1.1



Melanie Preiner - #20

G, 5-6, Jr., Stillwater, Minn.

Year	G	FG	FGA	PCT	3FG	FGA	PCT	FT	FTA	PCT	REB	AVE	A	ST	TO	BS	PTS	AVE
2005-06	22	91	237	.384	48	139	.345	34	41	.829	110	5.0	78	66	60	8	264	12.0
2004-05	25	63	173	.364	33	95	.347	15	21	.714	85	3.4	73	63	50	3	174	7.0
2003-04	26	43	106	.406	20	60	.333	3	8	.375	95	3.7	34	40	38	2	109	4.2
Totals	73	197	516	.381	101	294	.343	52	71	.732	290	3.9	185	169	148	13	547	7.4



Kim Sorenson - #21

G, 5-4, So., Blaine, Minn.

Year	G	FG	FGA	PCT	3FG	FGA	PCT	FT	FTA	PCT	REB	AVE	A	ST	TO	BS	PTS	AVE
2005-06	22	19	63	.302	2	7	.286	10	19	.526	46	2.1	40	25	47	4	50	2.3
2004-05	8	5	19	.263	0	2	.000	3	6	.500	8	1.0	7	12	12	2	13	1.6
Total	30	24	82	.292	2	9	.222	13	25	.520	54	1.7	47	37	59	6	63	2.1





Career, Individual Statistics



Jana Benitz - #23

G, 5-7, So., Plum City, Wis.

Year	G	FG	FGA	PCT	3FG	FGA	PCT	FT	FTA	PCT	REB	AVE	A	ST	TO	BS	PTS	AVE
2005-06	19	30	76	.395	10	33	.303	23	31	.742	45	2.4	16	17	23	0	93	4.9



Justine Speckel - #24

G, 5-10, Fr., Buffalo, Minn.

Year	G	FG	FGA	PCT	3FG	FGA	PCT	FT	FTA	PCT	REB	AVE	A	ST	TO	BS	PTS	AVE
2005-06	6	1	3	.333	0	0	.000	0	0	.000	2	.3	0	2	1	0	2	.3



Traci Reimann - #25

P, 6-0, Jr., North Branch, Minn.

Year	G	FG	FGA	PCT	3FG	FGA	PCT	FT	FTA	PCT	REB	AVE	A	ST	TO	BS	PTS	AVE
2005-06	21	112	226	.496	5	22	.227	69	122	.566	221	10.5	49	37	72	5	298	14.2
2004-05	25	95	202	.470	16	41	.390	55	72	.764	152	6.1	28	25	75	10	261	10.4
2003-04	26	95	230	.413	8	39	.205	39	66	.591	213	8.2	52	37	77	11	237	9.1
Totals	72	302	658	.458	29	102	.284	173	260	.665	586	8.1	129	99	224	26	796	11.0



Caitlin Hunstock - #34

P, 5-10, So., Minneapolis, Minn./South

Year	G	FG	FGA	PCT	3FG	FGA	PCT	FT	FTA	PCT	REB	AVE	A	ST	TO	BS	PTS	AVE
2005-06	18	9	29	.310	2	14	.143	3	5	.600	24	1.3	4	4	15	0	23	1.3





Career, Individual Statistics



Jodi Kauth - #40

P, 6-0, Fr., Granton, Wis.

Year	G	FG	FGA	PCT	3FG	FGA	PCT	FT	FTA	PCT	REB	AVE	A	ST	TO	BS	PTS	AVE
2005-06	6	4	8	.500	0	0	.000	1	5	.200	11	1.8	0	2	6	0	9	1.5



Meghan Hunstock - #42

P, 5-11, So., Minneapolis, Minn./South

Year	G	FG	FGA	PCT	3FG	FGA	PCT	FT	FTA	PCT	REB	AVE	A	ST	TO	BS	PTS	AVE
2005-06	15	10	27	.370	0	2	.000	3	5	.600	19	1.3	2	1	8	0	23	1.5



Krista Cordes - #43

G, 5-9, Jr., Farmington, Minn.

Year	G	FG	FGA	PCT	3FG	FGA	PCT	FT	FTA	PCT	REB	AVE	A	ST	TO	BS	PTS	AVE
2005-06	22	66	174	.392	30	85	.353	21	26	.808	90	4.1	35	28	30	12	183	8.3
2004-05	22	23	67	.343	10	41	.244	5	8	.625	18	0.8	6	8	6	3	61	2.8
2003-04	8	4	14	.286	3	6	.500	2	2	1.000	4	0.5	1	0	1	0	13	1.6
Totals	52	93	255	.364	43	132	.325	28	36	.777	112	2.1	42	36	37	15	258	4.9



Megan Lindman - #44

P, 6-0, Jr., Rochester, Minn./Mayo

Year	G	FG	FGA	PCT	3FG	FGA	PCT	FT	FTA	PCT	REB	AVE	A	ST	TO	BS	PTS	AVE
2005-06	21	81	177	.458	1	2	.500	30	40	.750	94	4.5	22	25	48	22	193	9.2
2004-05	25	93	204	.456	0	0	.000	36	63	.571	137	5.5	23	35	44	35	222	8.9
2003-04	26	84	178	.472	1	2	.500	41	71	.577	114	4.4	19	26	53	27	210	8.1
Totals	72	258	559	.461	2	4	.500	107	174	.614	345	4.7	64	86	145	84	625	8.6

