

Appendix A

UW-RIVER FALLS INSTITUTIONAL SNAPSHOT

In accordance with the guidelines of the Higher Learning Commission, the following data is presented to provide an overview of the basic operations at UWRF. The “[about us](#)” section of the university’s Web site, the [Integrated Post-Secondary Education Data System \(IPEDS\)](#) reports, and the UW System [Achieving Excellence](#) reports provide additional information.

SECTION ONE: STUDENT DEMOGRAPHY

Headcount by Class Level	YEAR (classification)	2005-06 Headcount	2006-07 Headcount	2007-08 Headcount
Graduate	Masters	399	391	368
Graduate	Special (Graduate)	49	85	57
Graduate	Headcount TOTAL	448	476	425
Undergraduate	Freshman	1,766	1,768	1,862
Undergraduate	Sophomore	1,194	1,163	1,237
Undergraduate	Junior	1,180	1,158	1,162
Undergraduate	Senior	1,391	1,521	1,559
Undergraduate	Special (undergraduate)	121	100	178
Undergraduate	High School (Youth Options)	26	43	50
Undergraduate	Headcount TOTAL	5,678	5,753	6,048

Figure A-1

Headcount by Class Level

Student Statistics Reports. UW System Office of Policy Analysis and Research

NOTE: Class standing classification is determined by credit accumulation, not by year in school



Figure A-2

Graduate Student Headcount by Ethnicity and Gender

Headcount Enrollment by Degree Seeking Student	2005-2006	2005-2006	2005-2006	2006-2007	2006-2007	2006-2007	2007-2008	2007-2008	2007-2008
	Gender F	Gender M	TOTAL	Gender F	Gender M	TOTAL	Gender F	Gender M	TOTAL
Graduate									
American Indian/Alaskan Native	3	–	3	1	–	1	–	–	–
Asian/Pacific Islander	2	6	8	2	5	7	2	4	6
Black	4	3	7	6	–	6	3	2	5
Hispanic/Latino	6	–	6	4	1	5	1	1	2
International	2	2	4	–	2	2	–	–	–
White/Unknown/Undeclared	301	119	420	338	117	455	292	120	412
Graduate Total	318	130	448	351	125	476	298	127	425

Student Statistics Reports. UW System Office of Policy Analysis and Research

NOTES:

- Includes both degree and non-degree seeking students
- Excludes students studying away
- All multicultural student statistics are based on optional self-identification at registration



Figure A-3

Undergraduate Student Headcount by Ethnicity and Gender

Headcount Enrollment by Degree Seeking Student	2005-2006	2005-2006	2005-2006	2006-2007	2006-2007	2006-2007	2007-2008	2007-2008	2007-2008
	Gender F	Gender M	TOTAL	Gender F	Gender M	TOTAL	Gender F	Gender M	TOTAL
Undergraduate									
American Indian/Alaskan Native	11	16	27	10	16	26	16	12	28
Asian/Pacific Islander	114	75	189	109	80	189	87	81	168
Black	22	49	71	25	51	76	29	59	88
Hispanic/Latino	33	27	60	25	30	55	28	34	62
International	25	20	45	31	25	56	-	-	-
White/Unknown/Undeclared	3,226	2,060	5,286	3,193	2,158	5,351	3,382	2,320	5,702
Undergraduate Total	3,431	2,247	5,678	3,393	2,360	5,753	3,542	2,506	6,048

Student Statistics Reports. UW System Office of Policy Analysis and Research

NOTES:

- Includes both degree and non-degree seeking students
- Excludes students studying away
- All multicultural student statistics are based on optional self-identification at registration



Figure A-4

Student Headcount by Age

Total Headcount Enrollment by Age	2005-06	2006-07	2007-08
Graduate Age Group	Headcount	Headcount	Headcount
24 and under	74	64	79
25 and over	374	412	346
Graduate Total	448	476	425
Undergraduate Age Group	Headcount	Headcount	Headcount
24 and under	5,180	5,259	5,497
25 and over	498	494	551
Undergraduate Total	5,678	5,753	6,048

Student Statistics Reports. UW System Office of Policy Analysis and Research
 NOTE: Excludes students studying away

Figure A-5

Student Headcount by Residency

Undergraduate/Graduate	Residency Group	2005-06 Headcount	2006-07 Headcount	2007-08 Headcount
Graduate	Non-Resident	183	192	142
Graduate	Non-U.S. Resident	5	3	2
Graduate	Resident	260	281	281
Graduate	Headcount TOTAL	448	476	425
Undergraduate	Non-Resident	2,718	2,763	2,864
Undergraduate	Non-U.S. Resident	43	50	64
Undergraduate	Resident	2,917	2,940	3,120
Undergraduate	Headcount TOTAL	5,678	5,753	6,048

Student Statistics Reports. UW System Office of Policy Analysis and Research
 NOTE: Wisconsin residents are those paying the resident tuition rate

SECTION TWO: STUDENT RECRUITMENT AND ADMISSIONS

Figure A-6

Graduate Applications and Admissions

Graduate School Applications	2005	2006	2007
Applications Received	320	324	359
Students Accepted	262	261	253
Matriculations	173	167	150

Student Statistics Reports. UW System Office of Policy Analysis and Research



Undergraduate Applications	2005	2006	2007
Applications Received	3,223	3,172	3,174
Students Accepted	2,576	2,562	2,628
Matriculations	1,209	1,296	1,287
Transfer Applications			
Applications Received	831	753	866
Students Accepted	613	544	626
Matriculations	438	372	449
ACT Scores (mean)	22.14	21.80	21.93

Figure A-7

Undergraduate Applications and Admissions

Student Statistics Reports. UW System Office of Policy Analysis and Research

SECTION THREE: FINANCIAL ASSISTANCE FOR STUDENTS

Figure A-8

Financial Assistance

Financial Assistance for Students	2004-05	2005-06	2006-07	2007-08
Graduate				
Graduates who applied for aid	65%	74%	64%	34%
Graduates who received aid	60%	67%	61%	32%
Graduates who received loans	58%	66%	60%	90%
Graduates who received work study	17%	14%	10%	9%
Graduates who received scholarships/grants	6%	4%	4%	1%
Graduates who received academic based merit based scholarships	3%	2%	1%	1%
Undergraduate				
Undergraduates who applied for aid	85%	85%	86%	72%
Undergraduates who received aid	77%	82%	79%	68%
Undergraduates who received loans	74%	75%	76%	88%
Undergraduates who received work study	37%	36%	37%	36%
Undergraduates who received scholarships/grants	38%	39%	37%	35%
Undergraduates who received academic based merit based scholarships	18%	17%	17%	18%
Tuition Discount Rate—aggregate figures	unknown	68%	68%	62%



SECTION FOUR: STUDENT RETENTION AND PROGRAM PRODUCTIVITY

Figure A-9
Undergraduate Retention Rates

Retention of New Freshman–Fall to Fall	2005-06	2006-07
New Student Entries	1,189	1,281
New Student Retention	849	961
Retention Rate (in percentage)	71.4%	75.0%

Student Statistics Reports. UW System Office of Policy Analysis and Research

Figure A-10
Degrees Earned

Degrees Earned by Ethnicity	2005-06	2006-07
Graduate	Earned Degree	Earned Degree
American Indian/Alaskan Native	–	1
Asian/Pacific Islander	3	4
Black	1	2
Hispanic/Latino	1	2
International	2	3
White/Unknown/Undeclared	147	170
Graduate Total	154	182
Undergraduate	Earned Degree	Earned Degree
American Indian/Alaskan Native	4	5
Asian/Pacific Islander	17	22
Black	10	8
Hispanic/Latino	10	9
International	17	15
White/Unknown/Undeclared	881	1,024
Undergraduate Total	939	1,083

Student Statistics Reports. UW System Office of Policy Analysis and Research

Degrees Conferred Reports. UWRF Office of Enrollment Services

NOTE: Figure shows number of students earning degrees, not number of degrees earned



Degrees Earned by Classification of Instructional Programs (CIP) Code	2005-06	2006-07
CIP Code	Earned Degree	Earned Degree
01: Agriculture	117	166
03: Natural Resources	9	14
09: Communications and Journalism	38	55
11: Computer and Information Systems	24	14
13: Education	147	145
16: Foreign Languages	26	19
23: English	30	34
26: Biological Sciences	73	68
27: Mathematics	23	26
30: Interdisciplinary Studies	19	16
40: Physical Sciences	35	29
42: Psychology	54	54
44: Social Services	15	30
45: Social Sciences	76	87
50: Visual and Performing Arts	57	50
51: Health	19	25
52: Management and Marketing	233	277
54: History	26	29
Total	1,021	1,138

Figure A-11

Degrees by Academic Field

Degrees Conferred Reports. UWRF Office of Enrollment Services

NOTE: Figure shows number of degrees earned, not number of students receiving degrees



Figure A-12

External Test Pass Rates

CPA Exam Results	Candidates	Candidates	Candidates	Candidates	CPA Exam Results	Candidates	Candidates
2000-03	2000	2001	2002	2003	2004-05	2004	2005
May repeaters	5	7	5	12	Passed all sections	1	3
New test	9	7	8	15	Passed some sections	6	9
November repeaters	13	7	10	12	Passed no sections	1	12
Total candidates	27	21	23	39	Total candidates	8	24
UWRF Total % Passed all sections	26%	29%	17%	26%	UWRF Total % Passed all or some sections	87.5%	50.0%
National Total % Passed all sections	23%	24%	22%	24%	National Total % Passed all or some sections	42.4%	57.1%

NOTE: In addition to the CPA examination, students in education take the Educational Testing Service [Praxis II Pre-Professional Skills Test \(PPST\)](#) prior to student teaching. The pass rate for students completing the teacher education program with certification is 100 percent.

SECTION FIVE: FACULTY QUALIFICATIONS

Figure A-13

Academic Qualifications of Teaching Staff

Faculty Degrees	2005-06 Headcount	2006-07 Headcount	2007-08 Headcount
Faculty	Fall 2005	Fall 2006	Fall 2007
Doctorate	194	196	193
Professional Degrees, e.g. MFA, JD	15	14	15
Specialist Masters, e.g. MM (music), MLS, MBA	4	3	3
Masters	4	4	6
Total	217	217	217
Teaching Academic Staff			
Doctorate	36	40	44
Professional Degrees, e.g. MFA	4	5	8
Specialist Masters, e.g. MM (music), MLS, MBA	10	10	14
Masters	68	75	88
Undergraduate*	12	14	16
Total	130	144	170

* teaching staff without master's degrees include some music professionals teaching private lessons and physical education specialists or coaches

**SECTION SIX: COMPUTER ACCESS**

UWRF provides students with access to computers and the Internet in a variety of ways and locations. As of December 2007, availability was as follows:

Computer Labs	Seats/Units	Hours/Week
General access labs*	128	88
Library workstations	61	98
Academic department labs	185	varies
Residence hall labs	30	24/7
Residence hall connections	2,792	24/7
Wireless access points	250	24/7
Internet kiosks	16	124
University Center lab	15	90

Figure A-14

**Campus
Computer
Labs**

* one general access lab in South Hall is available to students 24 hours a day.
For more information, see the [ITS Computer Labs Web site](#).

Other instructional technology includes permanent and mobile technology enhanced classroom and teaching computer labs. As of December 2007, availability was as follows:

Additional Technology	Sites/Units	Hours/Week
Technology enhanced classrooms	61	57
Mobile TEC equipment	14	varies
Teaching computer labs (4 labs)	138	228
Department teaching labs	80	varies

Figure A-15

**Additional
Campus
Technology**

A UW System utility provides campuses in the system with a common learning management system, [Desire to Learn \(D2L\)](#). For fall 2007, student and faculty use of D2L was:

- 556 active classes (as of December 2007)
- 5,445 student users (as of December 2007)
- 231 faculty users (as of December 2007)



SECTION SEVEN: FINANCIAL DATA

Figure A-16

Revenues and Expenses

Financial Data unrestricted revenues and expenses	2005	2006
Assets—Current	June 30, 2005	June 30, 2006
Cash and Cash Equivalents	\$ 20,863,777.19	\$ 17,180,652.01
Accounts Receivable—Net	2,078,838.83	1,820,220.64
Student Loans Receivable—Net	892,324.43	957,957.29
Capital Lease Receivable	—	—
Inventories	894,678.00	808,061.00
Prepaid Expenses	623,627.72	680,723.37
Deferred Charges	104,555.87	139,619.38
Total Current Assets	\$ 25,457,802.04	\$ 21,587,233.69
Assets—Non-Current		
Endowment Investments	\$ 271,600.58	\$ 254,050.61
Student Loans Receivable—Net	4,673,701.49	4,784,007.43
Capital Lease Receivable	—	—
Land	2,258,783.30	2,258,783.30
Improvements Other Than Buildings—Net	2,135,239.38	2,149,511.94
Construction in Progress	6,675,614.46	23,779,485.31
Buildings—Net	46,512,050.15	47,938,826.83
Equipment—Net	1,829,043.53	2,039,526.99
Library Holdings	21,659,121.03	22,042,781.50
Total Non-Current Assets	\$86,015,153.92	\$105,246,973.91
TOTAL ASSETS	\$111,472,955.96	\$126,834,207.60



Financial Data unrestricted revenues and expenses	2005	2006
Liabilities—Current	June 30, 2005	June 30, 2006
Accounts Payable and Accrued Liabilities	\$ 5,445,257.94	\$ 5,274,519.12
Notes and Bonds Payable	587,540.20	943,023.03
Capital Lease Obligations	71,931.23	65,858.07
Deferred Revenue	1,988,775.89	2,112,398.61
Compensated Absences	662,574.72	778,090.78
Deposits of Student Organizations	1,897.77	2,145.18
Total Current Liabilities	\$ 8,757,977.75	\$ 9,176,034.79
Liabilities—Non-Current		
Notes and Bonds Payable	\$ 11,085,376.37	\$ 20,568,989.34
Capital Lease Obligations	686,720.38	612,090.87
Compensated Absences	553,676.58	623,736.63
Total Non-Current Liabilities	\$ 12,325,773.33	\$ 21,804,816.84
TOTAL LIABILITIES	\$ 21,083,751.08	\$ 30,980,851.63

Financial Data unrestricted revenues and expenses	2005	2006
Assets—Net	June 30, 2005	June 30, 2006
Invested in Capital Assets—Net of Related Debt	\$ 69,633,287.35	\$ 79,742,376.10
Restricted for Nonexpendable	—	—
Expendable	4,611,876.57	6,119,486.03
Student Loans	6,054,250.77	5,979,131.40
Other	6,052,205.85	280,459.90
Unrestricted	4,037,584.34	3,731,902.54
TOTAL NET ASSETS	\$ 90,389,204.88	\$ 95,853,355.97

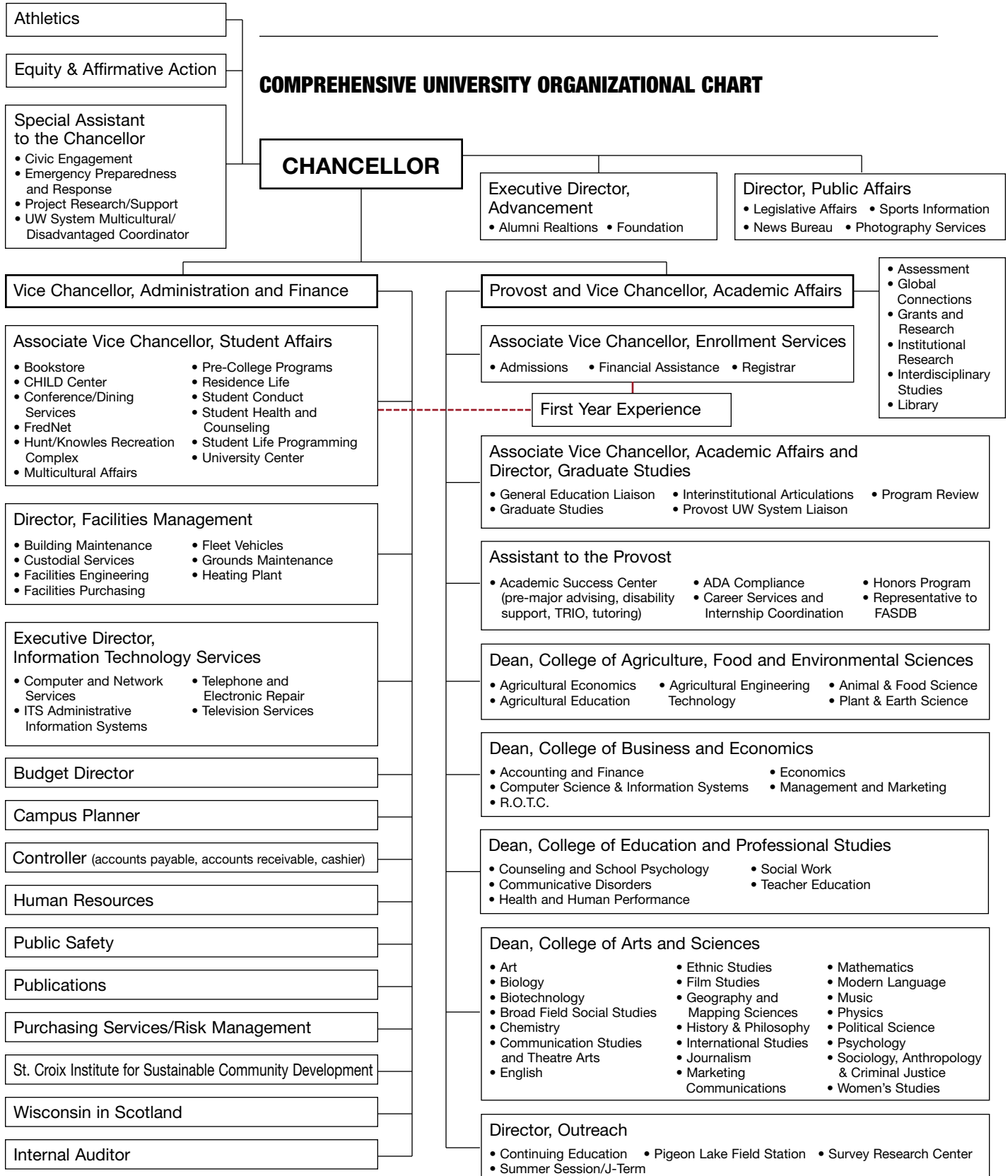
SEE ALSO: [IPEDS Financial Report](#).



Appendix B

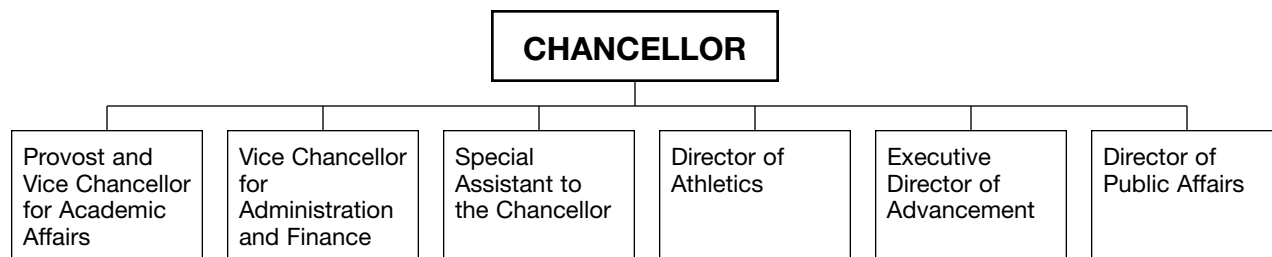
ORGANIZATIONAL CHARTS

COMPREHENSIVE UNIVERSITY ORGANIZATIONAL CHART

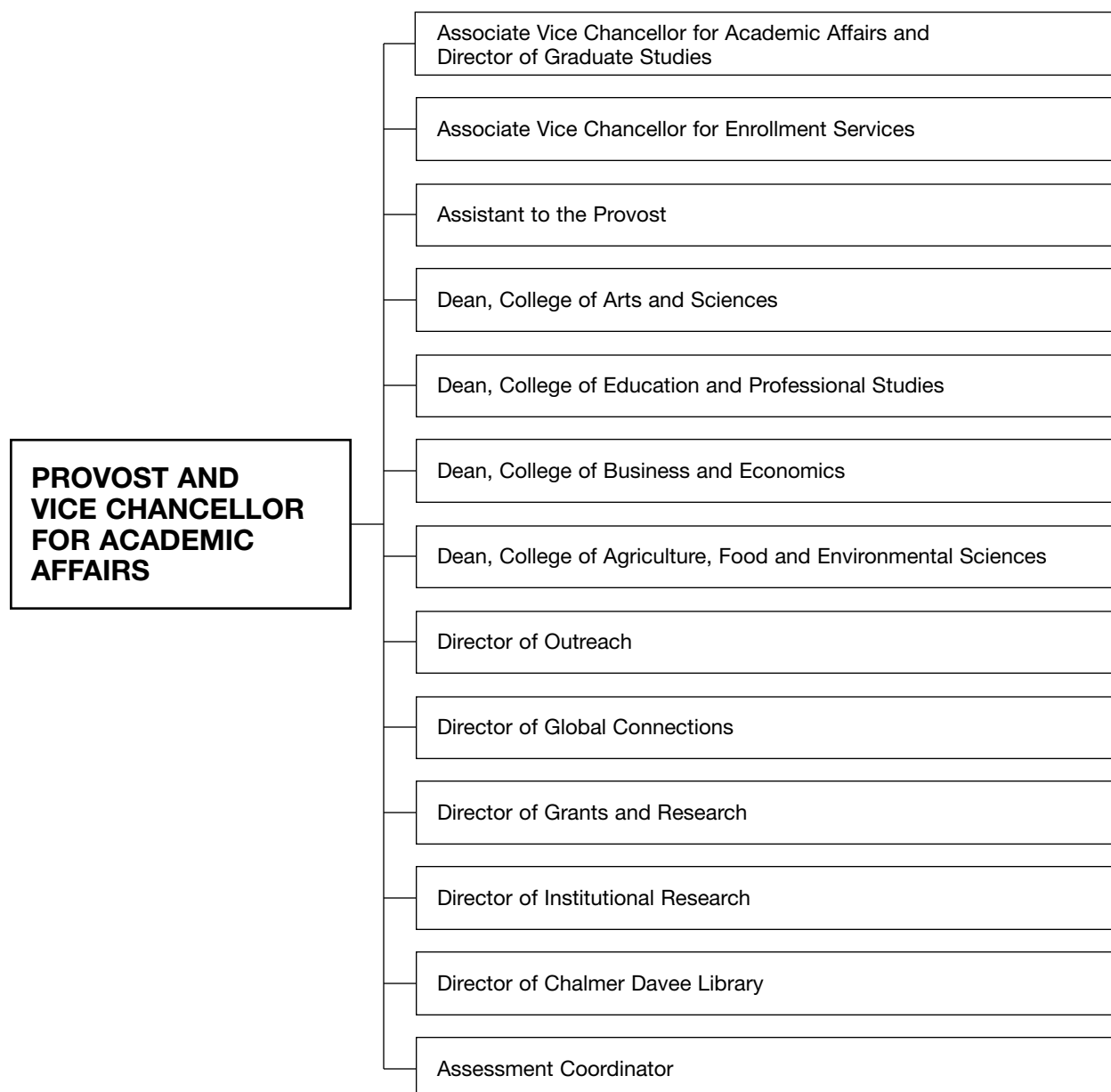




CHANCELLOR'S DIRECT REPORTS

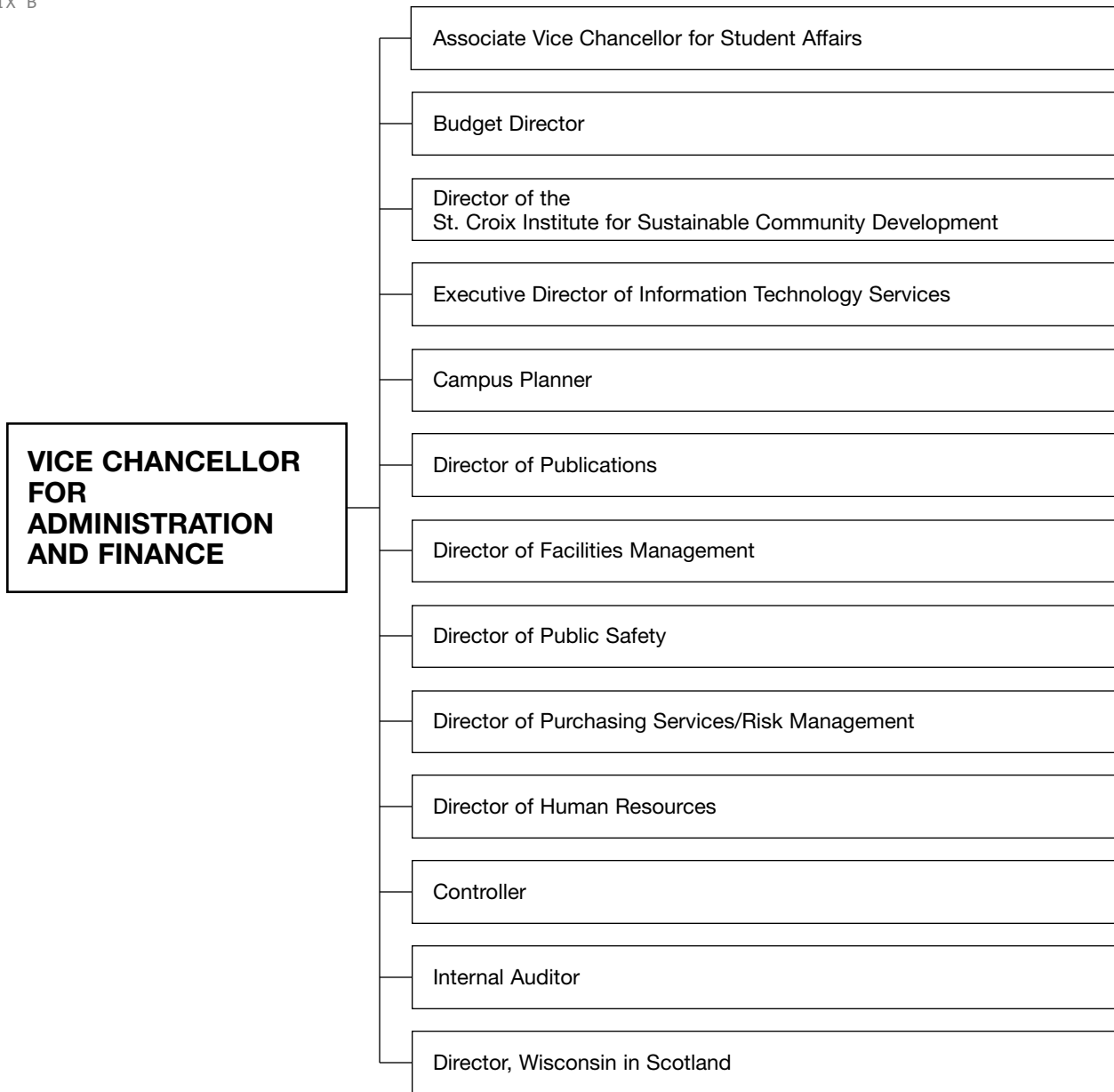


PROVOST AND VICE CHANCELLOR FOR ACADEMIC AFFAIRS DIRECT REPORTS





VICE CHANCELLOR FOR ADMINISTRATION AND FINANCE DIRECT REPORTS



Appendix C

FEDERAL COMPLIANCE

CREDITS, PROGRAM LENGTH, AND TUITION

The Commission expects an affiliated institution to be able to :

- 1) equate its learning experiences with semester or quarter credit hours using practices common to institutions of higher education;*
- 2) justify the length of its programs in comparison to similar programs found in accredited institutions of higher education; and*
- 3) justify any program-specific tuition in terms of program costs, program length, and program objectives (Handbook of Accreditation, page 8.2.1).*

1. UW-River Falls uses the semester credit hour as the standard for calculating the amount of a student's academic work. At UW-River Falls, a semester hour is defined as at least 50 minutes of lecture, discussion/recitation, or other class exercise per week per semester.

Two 50-minute periods per week per semester of laboratory are normally equivalent to one credit hour. For each hour of class time, students are expected to spend at least two hours outside of class in preparation. The number of class days per semester varies slightly because of variations in the calendar and the dates of holidays. Fall and spring semesters typically consist of at least 70 days of instruction over 14 weeks plus a week of final examinations.

2. All degree programs at UW-River Falls, including the length of programs and degree requirements, have been approved by the University of Wisconsin Board of Regents and are consistent with standards for similar programs found at other accredited institutions of higher education.

Prior to consideration by the UW Board of Regents, new degree programs undergo a review by external reviewers, comments and reactions from other UW institutions, and a review by UW System. The minimum number of credits required for a bachelor's degree at UW-River Falls is 120, and most undergraduate degree programs can be completed within that credit range. Students pursuing undergraduate degrees in some professional fields may be required to exceed the minimum of 120 credits in order to fulfill the requirements of their major as well as the university's general education requirements. Master's degree programs at UW-River Falls normally require a minimum of 30-36 credits. Details regarding credits and program length are provided in the [undergraduate catalog](#) and [graduate catalog](#), which are available online and in the Resource Room.



3. Program Tuition. In general, UW-River Falls does not have tuition rates that are program specific.

Tuition rates are established annually by the UW Board of Regents and are based on a student's place of residence (Wisconsin resident, Minnesota resident, or non-resident) and level of degree program (undergraduate or graduate). The UW System Board of Regents does allow institutions to charge a different tuition rate for programs that provide flexible scheduling or course delivery, provide evening or weekend services, offer degree completion or provide a certificate or customized master's degree.

UW-River Falls has two of these programs: the Master of Management and Education Specialist in School Psychology programs. The Master of Management program charges \$450 a credit and the Education Specialist in School Psychology program charges \$390 a credit. These rates are based on the costs needed to deliver the program and the market rates for similar programs in the region.

ORGANIZATIONAL COMPLIANCE WITH THE HIGHER EDUCATION REAUTHORIZATION ACT *(as amended)*

The Commission expects that affiliated institutions comply if required with the Title IV requirements of the Higher Education Reauthorization Act as amended in 1998. Evidence includes 1) copies of documents relevant to Title IV compliance; 2) evaluation of the organization's default rate, if any, and its plans for reducing default; and 3) any other documents concerning the institution's program responsibilities under Title IV of the Act, including any results of financial or compliance audits and program reviews. (Handbook of Accreditation, page 8.2.2.).

1. UW-River Falls will provide copies of all documents relevant to Title IV compliance to the Higher Learning Commission's evaluation team. The following documents are available in the Office of Financial Assistance: Program Participation Agreement (PPA), Eligibility and Certification Approval Report (ECAR), and the A-133 Audit results.
2. UW-River Falls maintains default rates below the national and state average. The default rates for both loan programs are supplied by the U.S. Department of Education. See figures C-1 and C-2.
3. UW-River Falls complies with Title IV-mandated student notification requirements regarding graduation rates and campus crime rates. Data on second-year retention and sixth year graduation rates are published in the university's [annual reports](#) and in the [accountability report](#) to the University of Wisconsin System, *Achieving Excellence at UW-River Falls*. UWRF's credits to degree average (132 in 2005-06) is the lowest of the UW System comprehensive institutions. The [campus crime report](#) with current statistics is posted online.



Figure C-1

Default Rates for Loan Programs

FFEL Program					
Fiscal Year 2005		Fiscal Year 2004		Fiscal Year 2003	
Number of borrowers entering repayment	1,447	Number of borrowers entering repayment	1,174	Number of borrowers entering repayment	1,134
Number in default	14	Number in default	10	Number in default	9
Official cohort default rate	0.9%	Official cohort default rate	0.8%	Official cohort default rate	0.7%
National cohort default rate	4.6%	National cohort default rate	NA	National cohort default rate	4.5%
Wisconsin cohort default rate	2.5%	Wisconsin cohort default rate	NA	Wisconsin cohort default rate	1.8%

Figure C-2

Default Rates for Loan Programs

Federal Perkins Loan Program					
June 30, 2006		June 30, 2005		June 30, 2004	
Number of borrowers entering repayment in 2004-05	442	Number of borrowers entering repayment in 2003-04	358	Number of borrowers entering repayment in 2002-03	391
Number in default on June 30, 2006	18	Number in default on June 30, 2005	20	Number in default on June 30, 2004	24
Cohort default rate	4.07%	Cohort default rate	5.59%	Cohort default rate	6.14%
National cohort default rate	8.10%	National cohort default rate	8.12%	National cohort default rate	8.29%
Wisconsin cohort default rate	5.66%	Wisconsin cohort default rate	6.62%	Wisconsin cohort default rate	5.56%

FEDERAL COMPLIANCE VISITS TO OFF-CAMPUS LOCATIONS

Federal regulations for recognition of accrediting agencies require the Commission to conduct a variety of evaluation activities to review and monitor the development of off-campus sites and campuses An off-campus site is a location at which a student can complete 50 percent or more of a degree program. A degree-completion site qualifies as an off-campus site when students in the program can complete all required courses there.

UWRF has one program that meets the above criteria. Successful participation in the [MSE-Professional Development Shared Inquiry Community](#) ultimately



results in a masters of secondary education professional development degree. The program is designed for K-12 educators in all teaching areas, higher education and vocational and technical school instructors, and anyone interested in developing teaching and leadership skills in an educational setting. Participants in this program meet once per month during the academic year for two years. To meet participant needs, UWRF has been partnering with some of the UW Colleges (currently UW-Barron County and UW-Marathon County with potential sites at UW-Marshfield and UW-Waukesha) to offer the program using their sites. Shared Inquiry Community is the only program that we offer that fits the standard for off campus locations.

ADVERTISING AND RECRUITMENT MATERIALS

Whenever an organization refers to its affiliation with the Commission, it will include the Commission's . . . contact information, [specifically] . . . the URL of the Commission's Web site, rather than the street address, and its local, rather than toll-free phone number. To avoid confusion, particularly among prospective students, organizations should clearly and prominently provide their own contact information so students know how to reach them (Handbook of Accreditation, page 8.2-3).

UW-River Falls advertising and recruitment materials that refer to its affiliation with the Higher Learning Commission include the URL of the commission's Web site as well as the Commission's local phone number.

The university's Web site and online catalog display our affiliation with the Higher Learning Commission and include direct links to the commission's Web site.

ORGANIZATIONAL RECORDS OF STUDENT COMPLAINTS

To comply with federal regulations, the Commission expects an affiliated organization to provide a comprehensive evaluation team with an organizational account of the student complaints it has received and their disposition. This account should cover the two years of operation preceding the comprehensive evaluation. Organizations have a variety of ways of providing the account, and almost any manner of accounting will be acceptable to a team (Handbook of Accreditation, page 8.2.4).

UW-River Falls maintains institutional records of student complaints and their disposition. Responding to and maintaining records of student complaints are managed by several administrative units at the university. The chancellor's office responds to complaints by systematically forwarding them to the appropriate administrative unit for investigation and review and keeps copies to assure a response. Complaints regarding academic matters and disputes regarding grades are initially referred to the appropriate academic department chair and/or college dean for resolution. Formal complaints concerning grades may be appealed to the academic standards committee, which in turn makes a recommendation to the provost as to disposition. The associate vice chancellor



for student affairs handles matters involving students' rights and responsibilities, including assuring that students are treated fairly and that due process is followed. Student Affairs responds to complaints and maintains files of relevant correspondence and final disposition. In all cases, files are open to inspection by the evaluation team.

PROFESSIONAL ACCREDITATIONS

The Commission grants general institutional accreditation. Because the Commission accredits an organization as a whole, it cannot omit from its evaluation any area or program of an organization. However, the organization's affiliation with the Commission—accredited or candidate status—is not equivalent to specialized accreditation of individual programs.... An organization identifies in its annual report to the Commission any adverse actions taken by professional accreditation agencies (Handbook of Accreditation, page 8.1-3).

As noted below, several programs at UWRF hold discipline-specific professional accreditation. Recent self-study reports will be available in the resource room.

Programs at the University of Wisconsin-River Falls are accredited by:

- **The National Council for Accreditation of Teacher Education and the Wisconsin Department of Public Instruction**
College of Education and Professional Studies and all major and minor programs leading to teacher certification
- **The Association to Advance Collegiate Schools of Business International**
College of Business and Economics
- **Accrediting Council on Education in Journalism and Mass Communications**
Department of Journalism
- **American Alliance for Health, Physical Education, Recreation and Dance / National Association for Sport and Physical Education**
Department of Health & Human Performance
- **The American Chemical Society**
Department of Chemistry
- **Council for Academic Accreditation in Audiology/Speech-Language Pathology**
Department of Communicative Disorders
- **National Council of Teachers of Mathematics**
Department of Mathematics
- **The National Association of Schools of Music**
Department of Music
- **Council on Social Work Education**
Department of Social Work



Acknowledgements

This study could not have been completed without the contributions of offices and individuals across the campus that provided information, read drafts and submitted comments and corrections.

Special thanks to the following offices and services:

- The offices of the chancellor and provost
- Davee Library—Valerie Malzacher, director
- Information Technology Services—Lisa Wheeler, executive director
- Publications—Kevin Bertelsen, director
- Survey Research Center—David Trechter, director

Drafting the Report:

Members of the following task forces provided the initial structure for the report, obtaining evidence and creating the initial drafts. The chairs and co-chairs of these task forces served on the central planning committee for the self-study, providing continued guidance for the process.

TASK FORCE A: MISSION & INTEGRITY

- Co-Chair: Suzanne Hagen—Equity & Compliance/Communication Studies
- Co-Chair: Gregg Heinselman—Student Affairs
Dan Asp—Building Maintenance
Rosanne Bump—Community/Chamber of Commerce
Lynn Jermal—Art
Katrina Larsen—Outreach
Tyra Nelson—Academic Success Center

TASK FORCE B: PREPARING FOR THE FUTURE

- Co-Chair: Kevin Bertelsen—Publications
- Co-Chair: Mark Meydam—Admissions
Dale Braun—Campus Planning
Mary Foster, Dean's Assistant—College of Arts and Sciences
Blake Fry—Dean of Students
Waldo Hagen—Facilities Management
Terry Halvorson—Accounting
Cally Henderson—Human Resources
Katherine Leisch—Student Government
Dale Gallenberg—College of Agriculture, Food and Environmental Sciences

TASK FORCE C: ASSESSMENT

- Co-Chair: Mary Manke—College of Education and Professional Studies
- Co-Chair: Brian Schultz—College of Business and Economics/Economics
Terry Brown—College of Arts and Sciences
Yunge Dutton—Registrar's Office



Tricia Davis—Assessment Coordinator
Tracey Gladstone-Sovell—Political Science
Eileen Korenic—Physics
Mike Middleton—Plant and Earth Science
Darcy NekoIny—Graduate Student
Lisa Pillow—Library
Mike Reich—Psychology
Alice Reilly-Myklebust—Student Health Services
Mike Stifter—Student Services and Programs, Facilities Management
Jennifer Willis-Rivera—Communication Studies and Theatre Arts

TASK FORCE D: STUDENT LEARNING & EFFECTIVE TEACHING

- Chair: Brad Caskey—College of Arts and Sciences/Psychology
Bob Baker—Plant and Earth Science
Keith Chavey—Mathematics
Connie Foster—College of Education and Professional Studies
Connor Luby—Student Government
Faye Perkins—Health and Human Performance/College of Education
and Professional Studies
Glenn Potts—Economics
Rose Rude—Academic Success Center

TASK FORCE E:

ACQUISITION, DISCOVERY & APPLICATION OF KNOWLEDGE

- Chair: David Trechter—College of Agriculture, Food and
Environmental Sciences/Extension/Agricultural Economics
William Campbell—Grants and Research
Douglas Johnson—Graduate Studies/College of Arts and Sciences
Nan Jordahl—Assistant to the Provost
Michele McKnelly—Library
Karl Peterson—Chemistry
Dan Semi—Information Technology Services
Richard Wells—Alumni

TASK FORCE F: ENGAGEMENT & SERVICE

- Chair: Mark Kinders—Public Affairs
Colleen Callahan—Journalism
“Mekha” Darrell Kaaliq El-Shad Jones—Student
Terry Ferris—Plant and Earth Science
Vicki Hajewski—Leadership Center; Affirmative Action
Dan McGinty—University Advancement
Barbara Nemecek—College of Business and Economics
Don Richards—Community/City of River Falls
Amber Tubré—Outreach

READING TEAM

Kris Allen—Outreach and Graduate Studies
Deb Allyn—Health and Human Performance



ACKNOWLEDGEMENTS

Bill Anderson—Plant and Earth Science
Jennifer Borup—Social Work
Elaine Hardwick—Biology
Dawn Hukai—Management and Marketing
Nan Jordahl—Assistant to the Provost
Tracy O’Connell—Marketing Communications
Mike Reich—Psychology
Alan Tuchtenhagen—Enrollment Services
Terry Willson—Student Services and Programs
Ruth Wood—English

FINAL WRITING TEAM

Gorden Hedahl
Suzanne Hagen
David Trechter
Kevin Bertelsen

RESOURCE ROOM COORDINATOR

Alyson Jones—University Archives

SELF-STUDY ADMINISTRATIVE ASSISTANCE

Gina Welke, Administrative Assistant—Self-Study
Deb Bowers, Administrative Assistant—Institutional Research

SELF-STUDY COORDINATOR

Gorden Hedahl—Communication Studies and Theatre Arts

DESIGN AND LAYOUT

Kevin Bertelsen—Publications