

UWRF Web Development Help

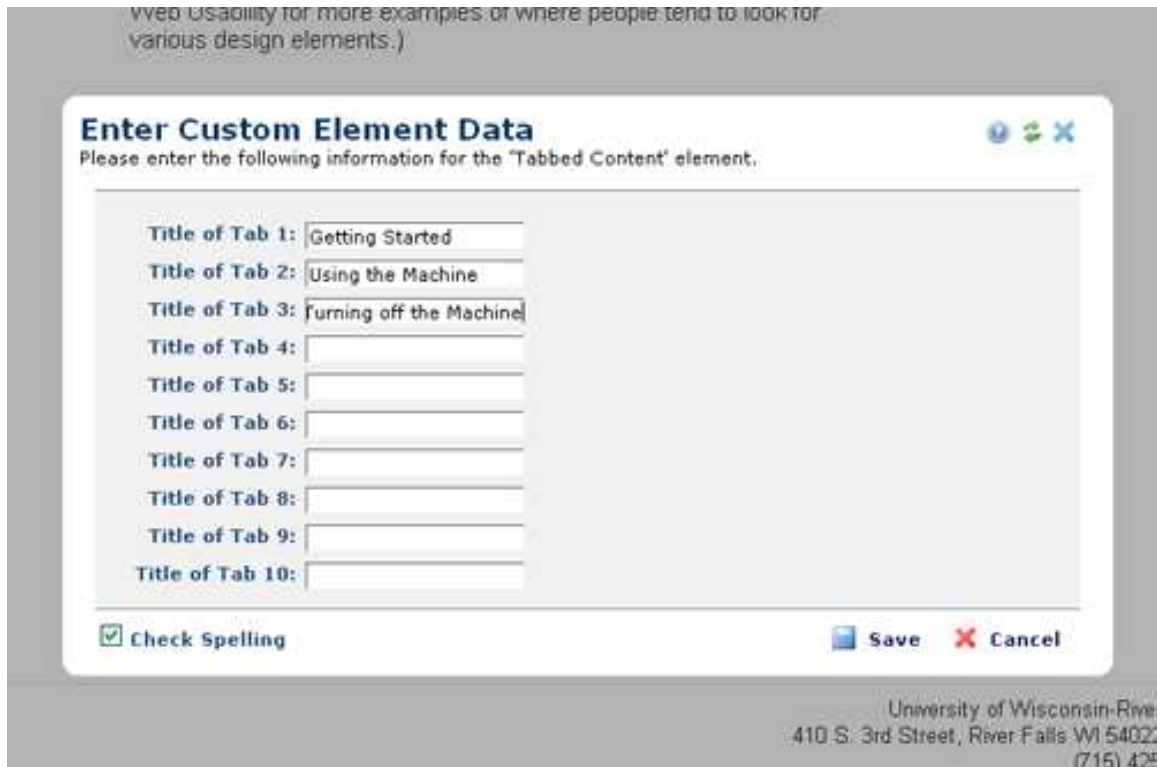
Using the “Tabbed Content” Custom Elements for the CMS

The “Tabbed Content” custom element allows authors to post content in separate partitions. Visitors can retrieve this content by clicking a tab.

How to:

Open a page you wish to have host the tabbed content element.

1. Place the tabbed content custom element in the container
AN ERROR MESSAGE will occur (this is normal)
2. Select the element and Choose the “Data” icon

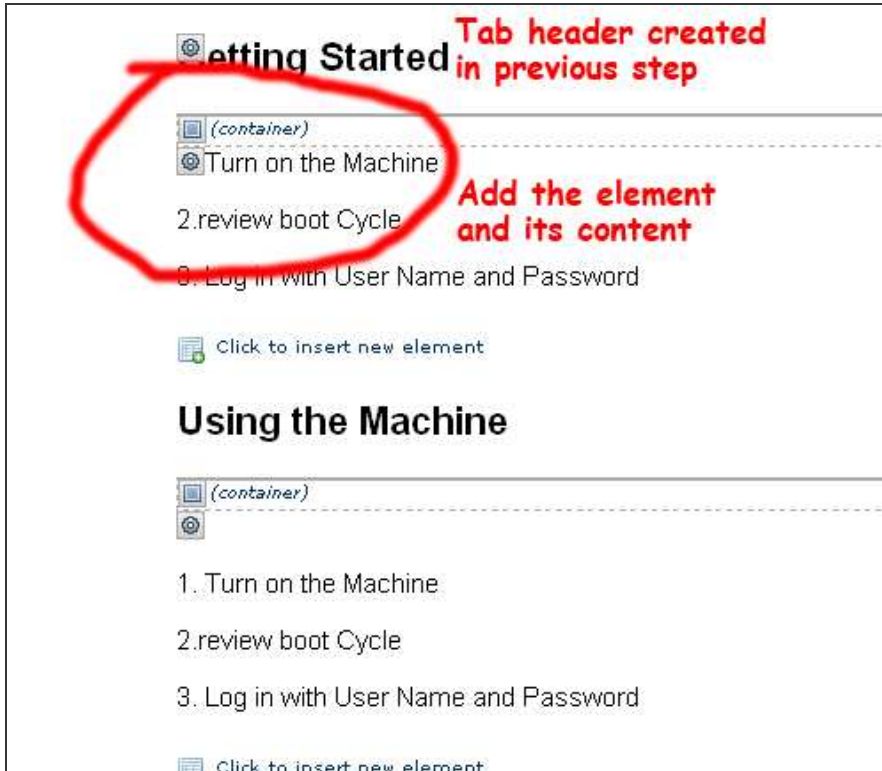


The screenshot shows a dialog box titled "Enter Custom Element Data" with the instruction "Please enter the following information for the 'Tabbed Content' element." The dialog contains ten input fields labeled "Title of Tab 1" through "Title of Tab 10". The first three fields are filled with the text "Getting Started", "Using the Machine", and "Turning off the Machine" respectively. The remaining seven fields are empty. At the bottom left, there is a checked checkbox for "Check Spelling". At the bottom right, there are "Save" and "Cancel" buttons. The background of the dialog is a light gray, and the overall window has a standard operating system title bar with minimize, maximize, and close icons.

3. Label each tabs by typing in the open fields. The above screen capture provides an example.

4. A header for each tab will appear and below the header will be a container to insert the appropriate element.

5. Insert the desired element such as a text block or YouTube video



6. Populate the element with the desired content.

7. Publish the page. The screen capture below shows a published example.

